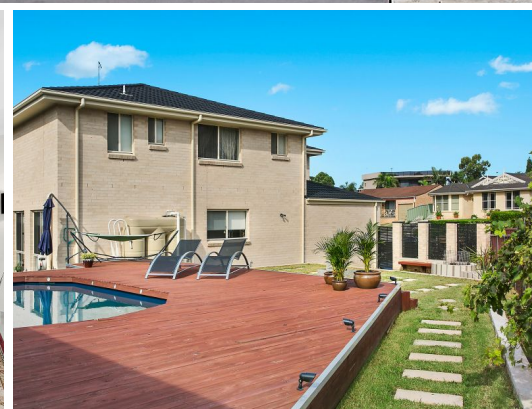


STONE



18 Province Street ABBOTSBURY, NSW



### Contemporary family home with convenient address

An excellent option for family living in a prominent position, this dual level residence presents contemporary style and ultimate convenience. It's just a short walk to buses, shops, dining, Stockdale Crescent Reserve and the Western Sydney Parklands.

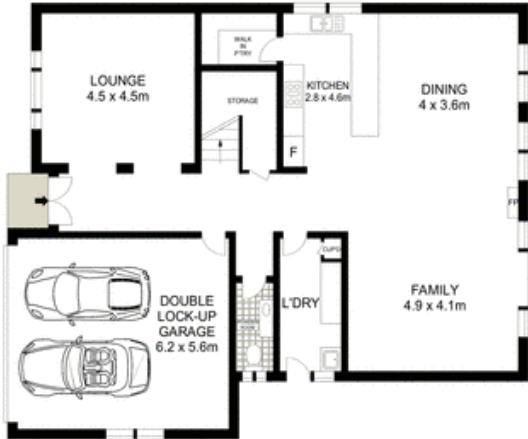
- Ultra-modern designed home surrounded by quality properties
- Formal lounge plus separate open plan dining and rumpus room
- Ducted air conditioning, fireplace, TV points throughout
- Outdoor flow to north facing alfresco entertaining area
- Side access to the backyard, pool surrounded by decking
- Gourmet kitchen with a walk-in pantry and gas appliances
- Four upper level bedrooms with built-ins, full main bathroom
- Master bedroom appointed with a walk-in wardrobe and ensuite

Stone Real Estate

02 9824 1100  
Liverpool



**FIRST FLOOR**



**GROUND FLOOR**



**SITE PLAN (NOT TO SCALE)**



Scale in metres. Indicative only. Dimensions are approximate. All information contained herein is gathered from sources we believe to be reliable. However we cannot guarantee its accuracy and interested persons should rely on their own enquiries.

18 Province Street, Abbotsbury

**McGrath**