



3 Birgitte Crescent CECIL HILLS, NSW



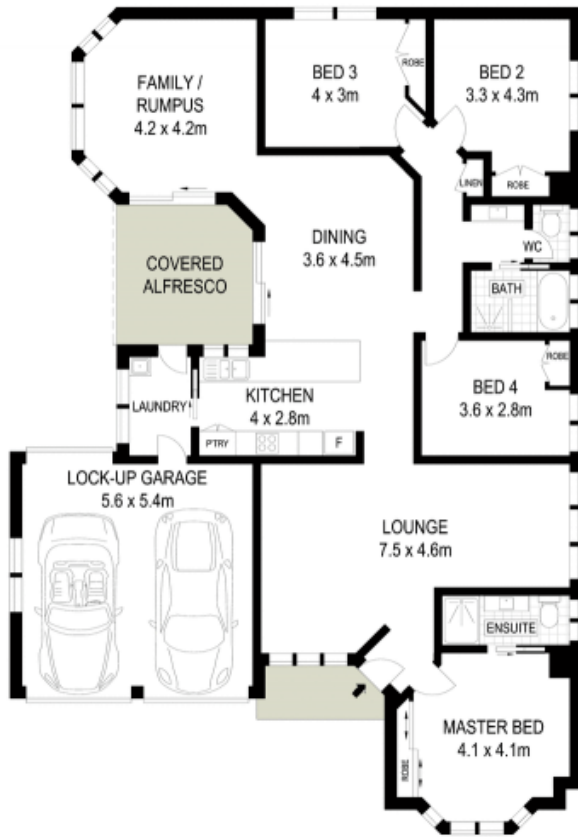
Modern style and family comfort in peaceful setting

Smartly renovated and beautifully presented, this welcoming home's spacious functional layout is tailor made for the growing family or downsizers. Its superbly peaceful setting is within a short walk of Cecil Hills Plaza, numerous schools and expansive natural parklands.

- Practical layout incorporates generous separate living spaces
- Newly refreshed interiors reveal sophisticated modern style
- Covered alfresco entertaining area, child-friendly backyard
- Open kitchen includes stainless appliances, breakfast bench
- Four good sized bedrooms, all fitted with built-in wardrobes
- Master separated for privacy, features bay window and ensuite
- Recently updated bathrooms boast sleek finishes, appointments
- Timber floorboards, ducted air conditioning and vacuum, alarm

Stone Real Estate

02 9824 1100
Liverpool



McGrath

Scale in metres. Indicative only. Dimensions are approximate. All information contained herein is gathered from sources we believe to be reliable. However we cannot guarantee its accuracy and interested persons should rely on their own enquiries