



63 Rossini Drive HINCHINBROOK, NSW



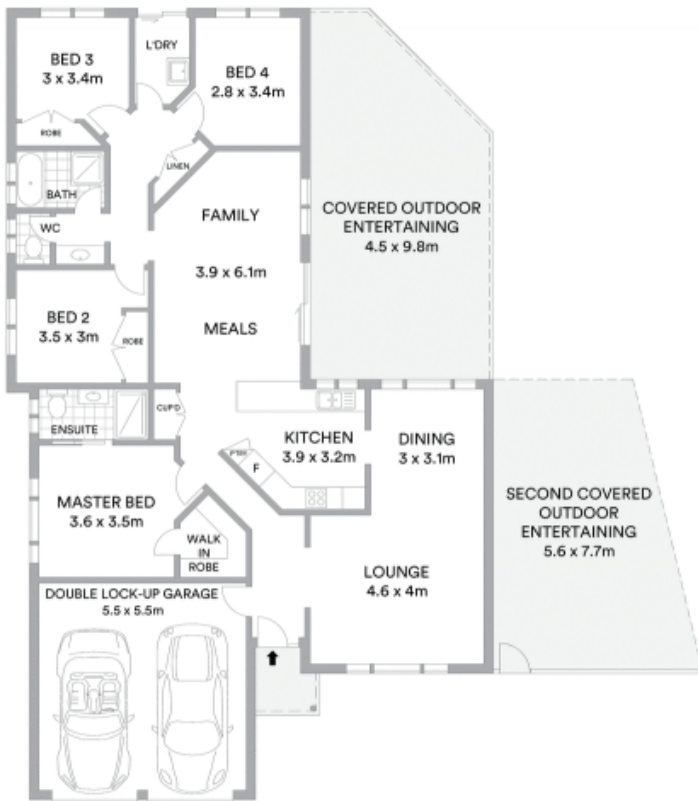
Well presented modern home near parks and schools on a corner block.

Peacefully positioned for family and entertainment living, this well presented home exudes comfort and convenience over a single level layout on 550sqm. It's close to Hinchinbrook Creek parklands, local schools, with easy access to Green Valley Plaza, T-Way, M7 and Liverpool CBD.

- Light filled interiors with neutral decor and tiled floors
- Selection of lounge, dining, family room and meals area
- Large north facing pergola covered entertaining setting
- Spacious kitchen stainless steel gas appliances, dishwasher
- Four bedrooms, three have built-ins, full three way bathroom
- Master bedroom with walk-in wardrobe and ensuite bathroom
- Air conditioning, downlights, enclosed child-friendly lawn
- Second entertaining area, side access, granny flat potential (STCA)

Stone Real Estate

02 9824 1100
Liverpool



McGrath

Scale in metres. Indicative only. All information contained herein is obtained from sources we believe to be accurate. We cannot guarantee its accuracy. Interested persons should make and rely on their own enquiries