



5 Woodman Place ABBOTSBURY, NSW



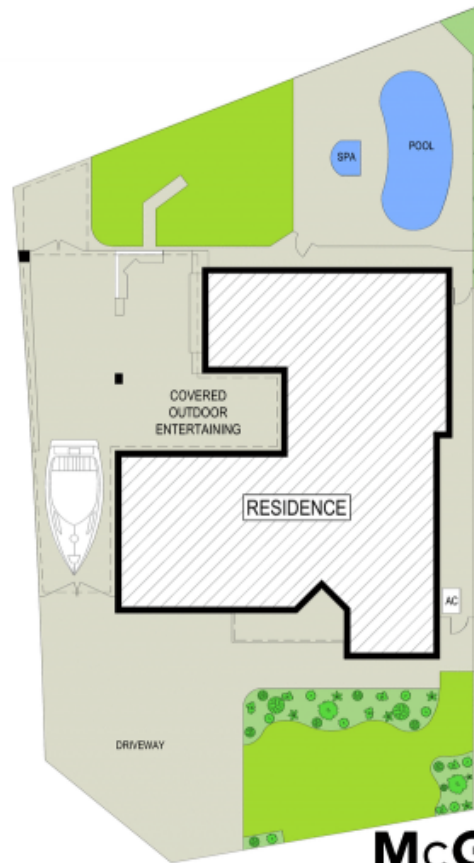
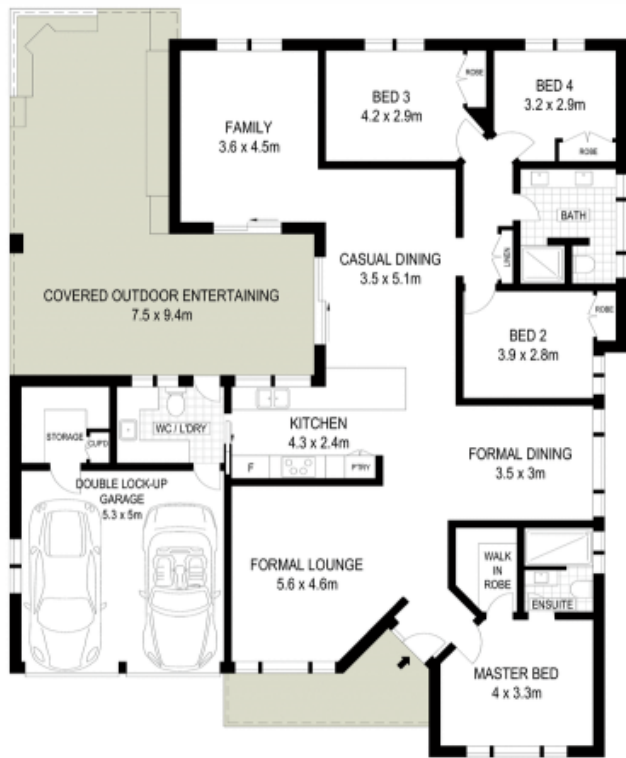
Sleek family entertainer in an exclusive street

With high vaulted ceilings, crisp white walls and sleek timber floorboards, this stylish entertainer with a pool is perfect for growing families. It's nestled in a quiet cul-de-sac moments to parks and handy to Stockland Wetherill Park, Prospect Reservoir, motorways and Westfield Liverpool.

- Gourmet open plan kitchen and flexible entertaining spaces
- Formal and informal living and dining plus potential rumpus
- Huge covered outdoor entertaining terrace and level garden
- Large sun drenched pool and outdoor spa for year round use
- Master bedroom with walk-in robe and bright ensuite bathroom
- All bedrooms with built-ins, bright master bathroom, third w/c
- Internal laundry, double lock-up garage, handy storeroom
- Handy to national parks and superb waterside picnic spots

Stone Real Estate

02 9824 1100
Liverpool



McGrath

Scale in metres. Indicative only. Dimensions are approximate. All information contained herein is gathered from sources we believe to be reliable. However we cannot guarantee its accuracy and interested persons should rely on their own enquiries