

6 Glenton Street ABBOTSBURY, NSW

3

2

1

### Modern family living in sought-after community

Stylish interiors and quality appointments ensure this light filled home easily caters to a modern family lifestyle. It boasts a north east to rear setting in a sought-after community, barely 400 metres from Abbotsbury Shopping Centre and local parklands.

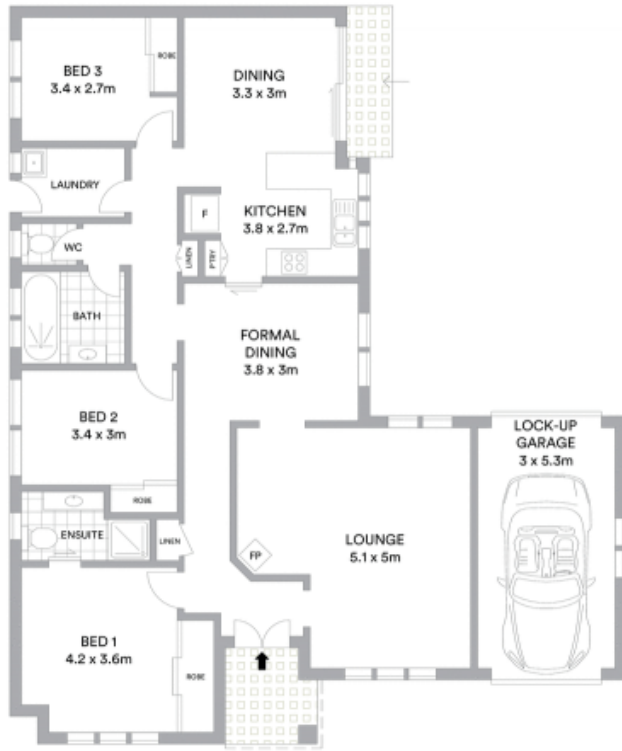
- Single level layout with separate lounge and dining spaces
- Inviting main living zone features wood combustion fireplace
- Vast alfresco entertaining area opens to sun drenched lawn
- Modern CaesarStone kitchen has dishwasher, stainless oven
- Three comfortably sized bedrooms, all include built-in robes
- Detached sleep-out provides private multi-functional space
- Updated master ens, spa bath in main bathroom with separate w/c
- Air conditioning and ceiling fans, cubby house, storage sheds

Price:

Price \$795,000

**Stone Real Estate**

02 9824 1100  
**Liverpool**



**McGrath**

Scale in metres. Indicative only. All information contained herein is obtained from sources we believe to be accurate. We cannot guarantee its accuracy. Interested persons should make and rely on their own enquiries