

STONE



249 Brenan Street SMITHFIELD, NSW



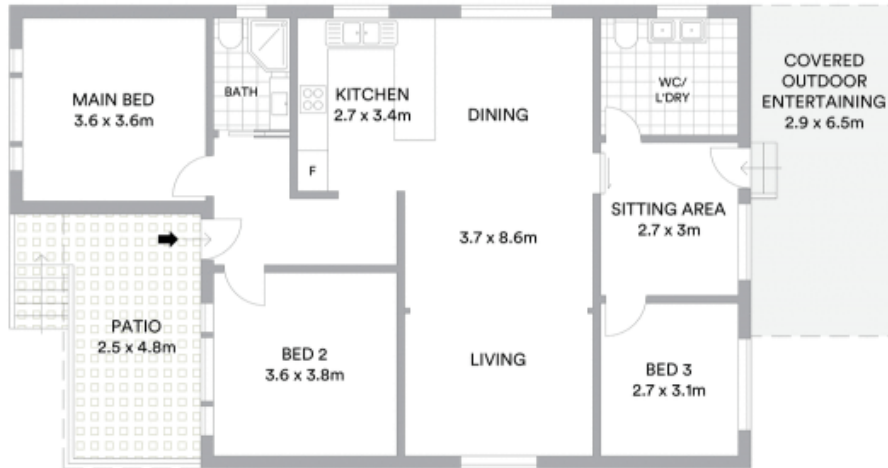
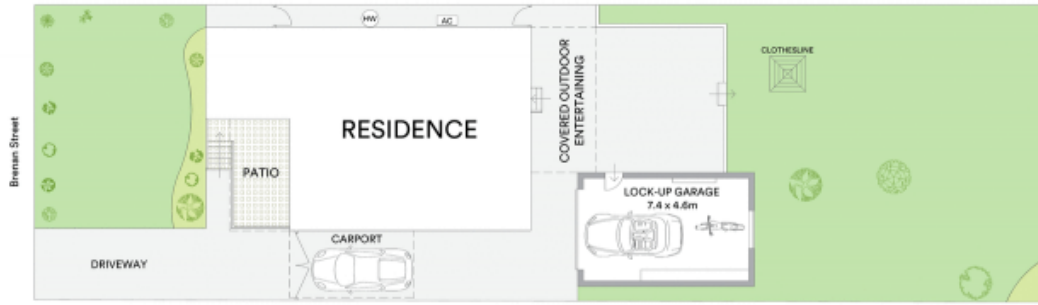
Classic home with potential in a central locale

Brimming with potential to renovate and add personal touches, this classic brick residence will delight those seeking space and convenience. It's ideally set on 600sqm close to Dublin Street shops, schools and buses, with easy access to both the M4 and M7.

- Classic brick facade with manicured front lawn and tall trees
- Generous open plan living and dining, separate sitting room
- Covered entertaining patio overlooks large child-friendly yard
- Classic kitchen with breakfast bar welcomes modern updates
- Beds are well scaled and provide comfortable accommodation
- Well equipped shower bathroom and internal laundry with w/c
- An excellent investment or opportunity for first homebuyers
- Air conditioning, ceiling fans, gated side access, carport

Stone Real Estate

02 9824 1100
Liverpool



McGrath

Scale in metres. Indicative only. All information contained herein is obtained from sources we believe to be accurate. We cannot guarantee its accuracy. Interested persons should make and rely on their own enquiries