



1 Murrumbidgee Street BOSSLEY PARK, NSW



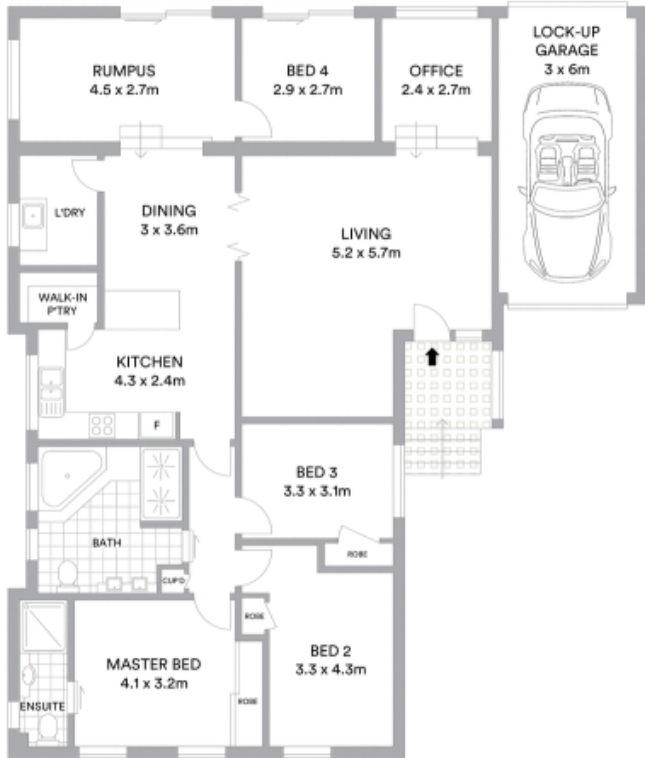
Fabulous home for entertaining in desirable street

This well maintained home offers a sought-after lifestyle, providing functionality, comfort and fantastic leisure facilities. The north facing 701sqm corner block with scope to build a granny flat (STCA) is close to schools, M4 and Western Sydney Parklands.

- Smartly presented living area features polished timber floors
- Separate open plan dining space adjoins a split level rumpus
- Substantial entertaining patio edged by an expanse of lawn
- Low maintenance grounds include a salt water swimming pool
- Kitchen with stainless steel appliances, sky lights, walk-in pantry
- Office, good sized bedrooms, master boasts an updated ensuite
- Stylish bathroom with double shower, bath, dual basin vanity
- Ducted air conditioning, alarm, downlights, tasteful decor

Stone Real Estate

02 9824 1100
Liverpool



McGrath

Scale in metres. Indicative only. All information contained herein is obtained from sources we believe to be accurate. We cannot guarantee its accuracy. Interested persons should make and rely on their own enquiries