



73 Congressional Drive LIVERPOOL, NSW



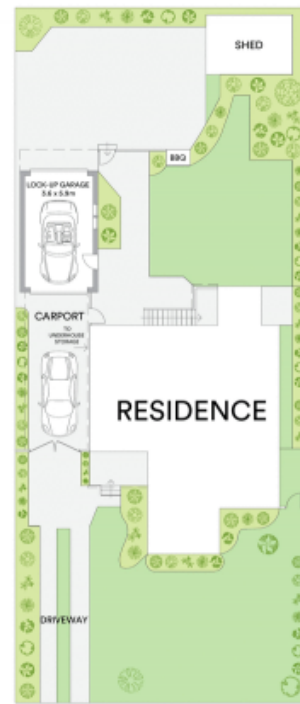
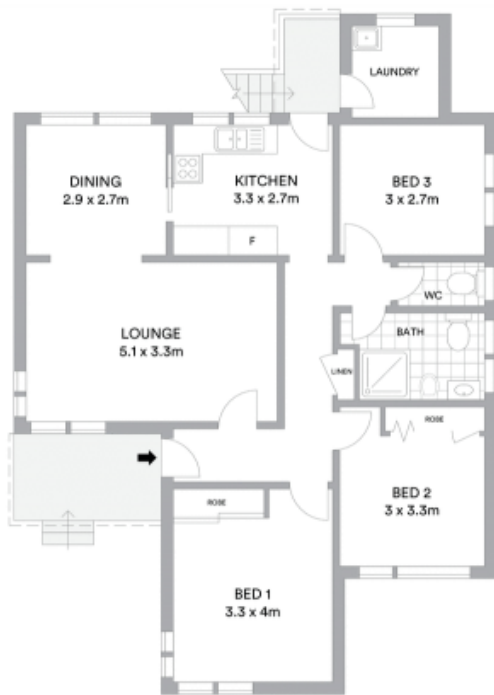
Peaceful family home in highly liveable location

This elevated, 1970s brick home offers classic good design, amidst lovingly maintained grounds affording effortless alfresco entertaining and lifestyle. Close to Liverpool's Westfield and CBD, both Casula and Liverpool train station, near bus transport, this is convenient living on a 557sqm lot.

- Timber look, low maintenance flooring throughout living spaces
- East facing dining room overlooks peaceful, private backyard
- Large level lawns front and rear of house, built-in barbecue
- Modern kitchen with gas cooktop, double sink, ample benchspace
- Three double bedrooms with garden views, two with built-ins
- Pendant lighting, gas heating and air conditioning throughout
- Renovated bathroom and powder room, plus separate laundry
- Efficient living with solar panels to add and multiple storage zones

Stone Real Estate

02 9824 1100
Liverpool



Congressional Drive



McGrath

Scale in metres. Indicative only. All information contained herein is obtained from sources we believe to be accurate. We cannot guarantee its accuracy. Interested persons should make and rely on their own enquiries