



16 Lawley Street BOSSLEY PARK, NSW

4 3 2

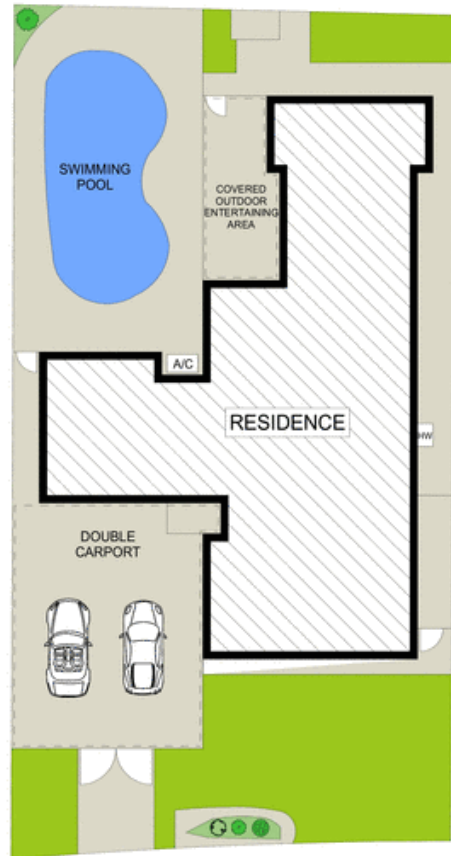
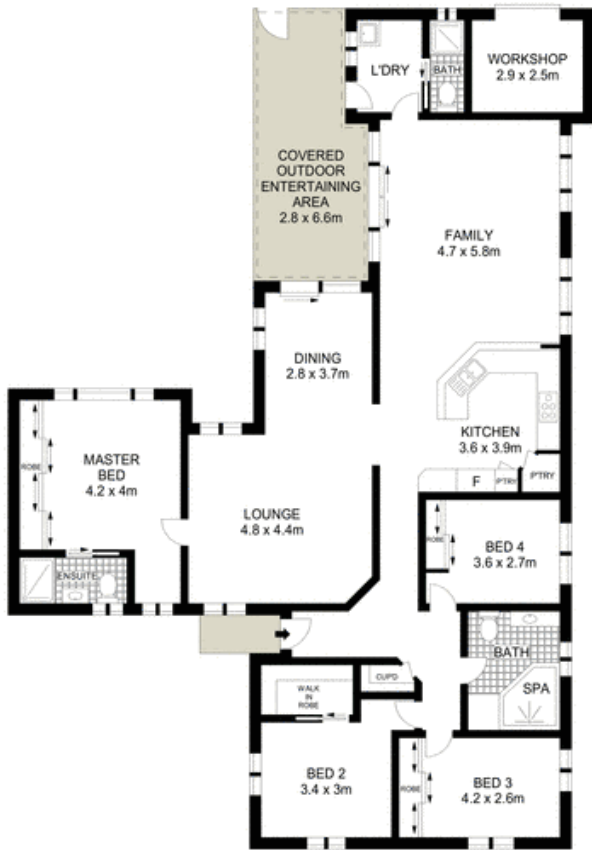
Immaculate family residence with versatile layout

Spread across a manicured 550sqm, this immaculate residence presents the perfect family lifestyle. The impressive, single level design offers a versatile layout and is conveniently located close to schools, shopping centres, restaurants, hospitals and T-Way.

- Spacious, light filled open plan lounge and dining area
- Undercover outdoor terrace ideal for year-round entertaining
- Family room overlooks in-ground pool and barbecue area
- Surrounded by child-friendly lawns and easycare gardens
- Modern kitchen with gas appliances and abundant storage
- Well appointed bedrooms, master has ensuite and outlooks
- Generous bathroom with corner spa bath, internal laundry
- Double carport, separate workshop, flexible living spaces

Stone Real Estate

02 9824 1100
Liverpool



SITE PLAN (NOT TO SCALE)



Scale in metres. Indicative only. Dimensions are approximate. All information contained herein is gathered from sources we believe to be reliable. However we cannot guarantee its accuracy and interested persons should rely on their own enquiries.

16 Lawley Street, Bossley Park

McGrath