



11 Dryden Place WETHERILL PARK, NSW



Lovely home located in a quiet neighbourhood

Situated in a tree lined cul-de-sac, this appealing home is designed with a practical single level layout and is pleasantly appointed. It's perfect for a young family and is within a stroll from William Stimson Public School plus Stockland Wetherill Park.

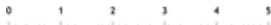
- Light filled lounge has wide windows, polished timber floors
- Separate dining space opens to the outdoor entertaining area
- All-season entertaining area is ideal for watching the kids
- Well appointed kitchen includes stainless steel appliances
- Good sized bedrooms have built-ins and enjoy northern light
- Airy bathroom appointed with a bath tub plus a separate w/c
- Family ready and features tasteful decor, air conditioning
- Secure garden, sunny lawn has ample space for a trampoline

Stone Real Estate

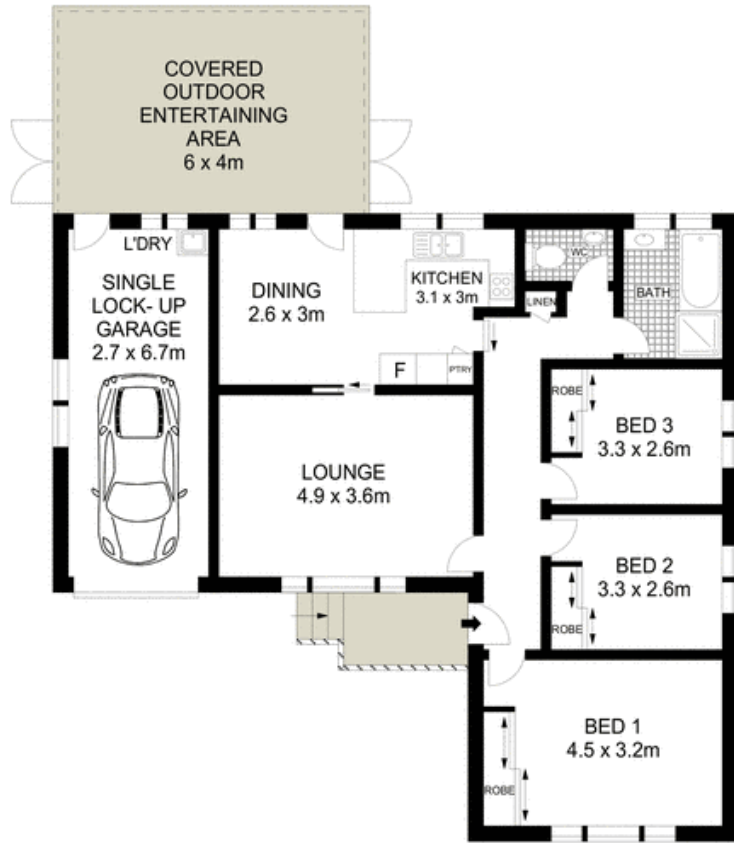
02 9824 1100
Liverpool



SITE PLAN (NOT TO SCALE)



Scale in metres. Indicative only. Dimensions are approximate. All information contained herein is gathered from sources we believe to be reliable. However we cannot guarantee its accuracy and interested persons should rely on their own enquiries.



11 Dryden Place, Wetherill Park

McGrath