

6 Apache Road BOSSLEY PARK, NSW

4 

2 

2 

Immaculately maintained, sunlit family residence

Enjoying an enviable northern aspect, this immaculately maintained residence offers versatile living options and deluxe modern finishes throughout. It is ideal for today's family lifestyle and easily accessible to Stocklands Mall, schools and transport.

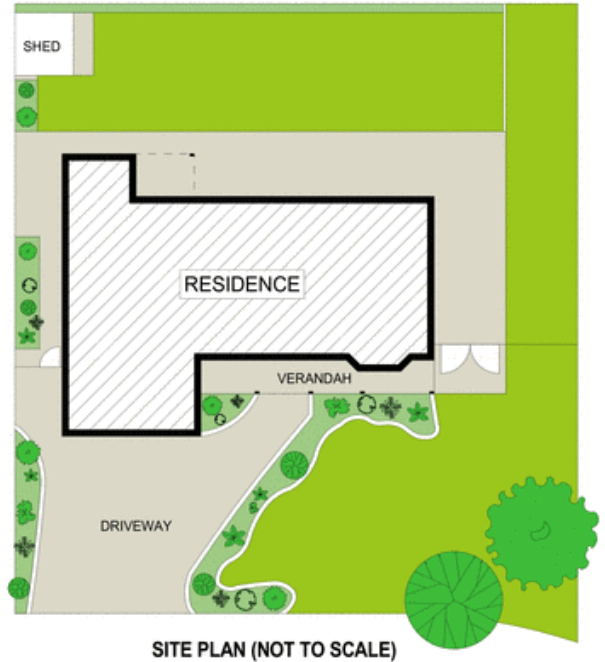
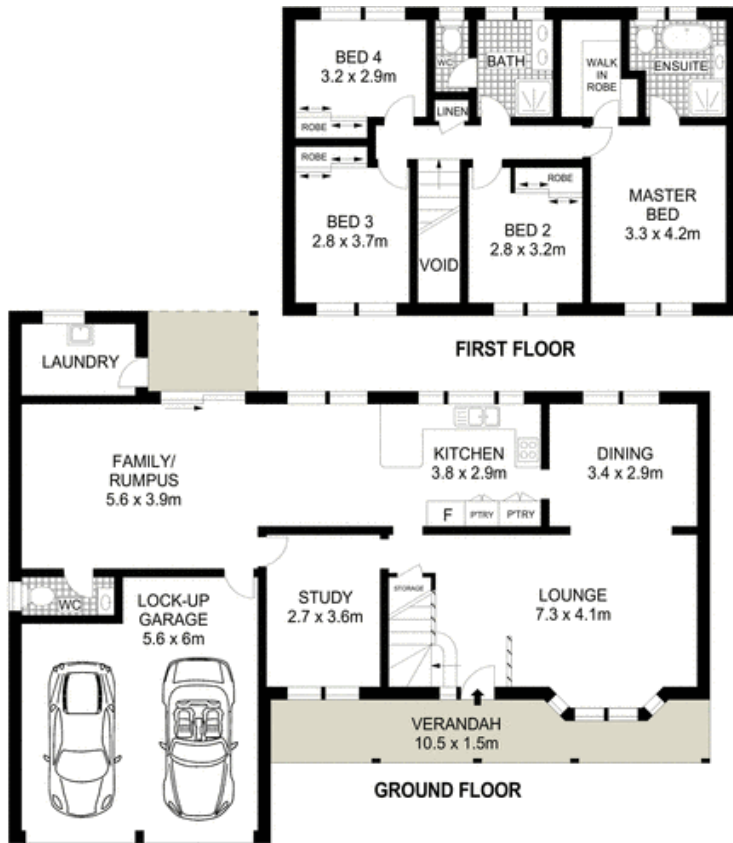
- Sunlit living and dining area provide an open concept design
- Level child-friendly backyard with an entertaining terrace
- Sleek granite kitchen equipped with stainless gas appliances
- Four double sized bedrooms each complete with built-in robes
- Master bedroom features a walk-in wardrobe and ensuite
- Home study, storage space and neutral tones throughout
- Polished tiles and cathedral style ceilings, air conditioning
- Double lock-up garage with internal access and side access

Price:

Price \$769,000

Stone Real Estate

02 9824 1100
Liverpool



Scale in metres. Indicative only. Dimensions are approximate. All information contained herein is gathered from sources we believe to be reliable. However we cannot guarantee its accuracy and interested persons should rely on their own enquiries.



6 Apache Road, Bossley Park

McGrath