

3/27 Eton Street SMITHFIELD, NSW

2 1 1

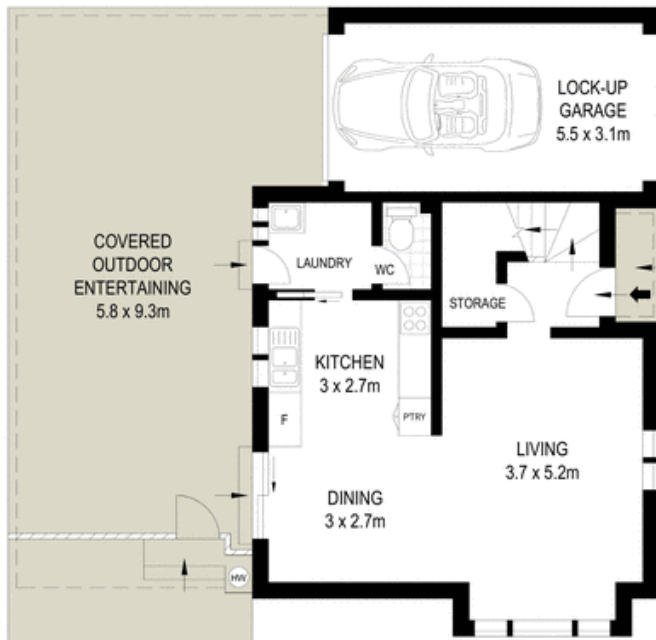
Immaculate dual level townhouse in quiet complex

Quietly set in a well maintained complex, this immaculate dual level townhouse offers an easycare lifestyle and stylishly updated interiors. It presents an ideal opportunity for astute investors or downsizers and is located close to transport and amenities.

- Impressive brick facade with an ornate garden and driveway
- Open plan living and dining with floating timber floorboards
- Oversized covered outdoor entertaining area with indoor flow
- Sleek kitchen boasts stainless steel appliances and storage
- Renovated family bathroom with separate shower and bath tub
- Two well scaled bedrooms, each with built-in wardrobes, linen press
- Security alarm, understair storage space, additional w/c
- Single lock-up garage, internal access, drive through second car

Price: Price guide over \$430,000

Stone Real Estate
02 9824 1100
Liverpool



GROUND FLOOR



FIRST FLOOR



Scale in metres. Indicative only. Dimensions are approximate. All information contained herein is gathered from sources we believe to be reliable. However we cannot guarantee its accuracy and interested persons should rely on their own enquiries



3/27 Eton Street, Smithfield

McGrath