



2 Ogden Close ABBOTSBURY, NSW



Exceptional family haven of space and flexibility

A flexible layout, stylish contemporary interiors and fabulous alfresco entertaining all combine to provide an outstanding family sanctuary in this generous dual level residence. It is positioned handy to a selection of shops, schools and all amenities.

- Generous layout featuring separate formal and informal zones
- Fabulous entertainers' backyard with undercover courtyard
- Salt water swimming pool enhanced by tranquil waterfall, spa
- American Oak kitchen, granite benchtops, quality European appliances
- Double sized bedrooms are appointed with built-in wardrobes
- Master bedroom features an ensuite, plantation shutters
- Spotted Gum floors in lounge, ducted air conditioning, natural gas
- Koi fish pond, side gate access for a boat, garden shed

Price:

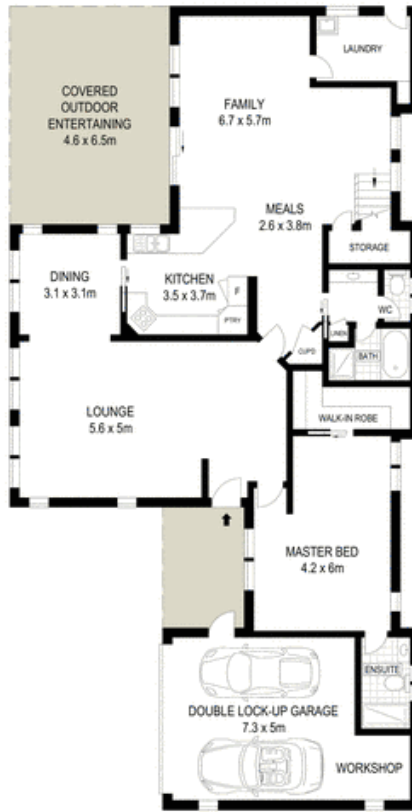
Price guide over \$885,000

Stone Real Estate

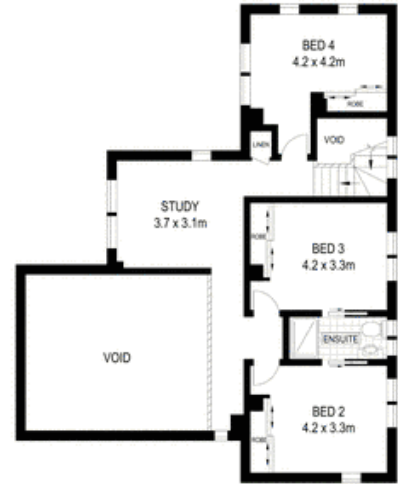
02 9824 1100
Liverpool



SITE PLAN (NOT TO SCALE)



GROUND FLOOR



FIRST FLOOR

0 1 2 3 4 5

Scale in metres. Indicative only. Dimensions are approximate. All information contained herein is gathered from sources we believe to be reliable. However we cannot guarantee its accuracy and interested persons should rely on their own enquiries

2 Ogden Close, Abbotsbury



McGrath