

12 Tudor Crescent CECIL HILLS, NSW

5 

4 

2 

Grand scaled family residence at exclusive address

Architecturally designed and impressively constructed, this prestigious residence is a magnificent family sanctuary with two lavishly appointed levels and flexible in-law accommodation. It enjoys a northern aspect in a quiet locale near schools and shops.

- Wonderful selection of all-occasion living and dining areas
- Features high ceilings, sophisticated decor, quality curtains
- Beautiful alfresco pavilion style space for entertaining
- Gourmet polyurethane/granite kitchen includes gas cooking
- King sized bedrooms and opulent appointed granite bathrooms
- Envidable master boasts a walk-in robe and a private ensuite
- Study, spacious rumpus, air conditioned, ducted vacuum, alarm
- Well considered with council approved self-contained quarters

Stone Real Estate

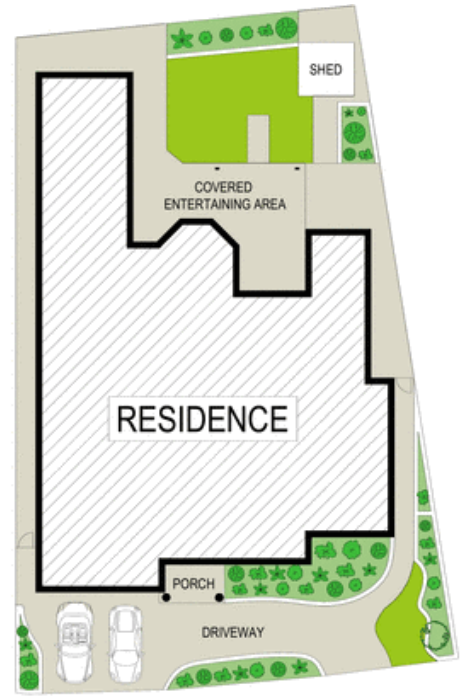
02 9824 1100
Liverpool



GROUND FLOOR



FIRST FLOOR



SITE PLAN
(NOT TO SCALE)

0 1 2 3 4 5

Scale in metres. Indicative only. Dimensions are approximate. All information contained herein is gathered from sources we believe to be reliable. However we cannot guarantee its accuracy and interested persons should rely on their own enquiries



12 Tudor Crescent, Cecil Hills

McGrath