

4 Glen Osmond Crescent BOSSLEY PARK, NSW



### Solid brick family home with multiple living areas

Offering an easycare lifestyle ideal for a growing family, this solid brick residence is infused with tasteful fittings and an abundance of northern sunlight. It is placed within a friendly neighbourhood close to schools, transport and Stocklands Mall.

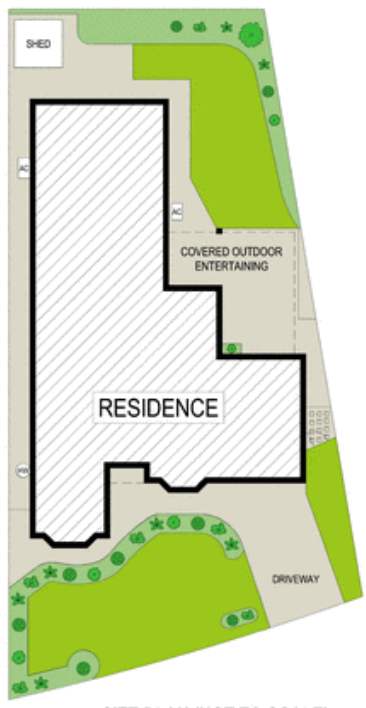
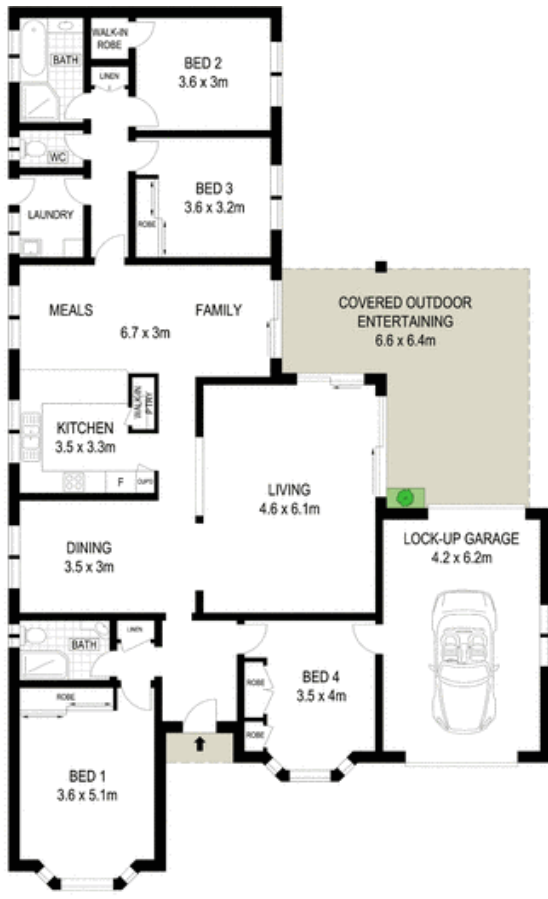
- Soaring ceilings enhance the selection of living/dining zones
- Dual outdoor flow onto a large pergola covered terrace
- Child-friendly backyard is ideal for effortless entertaining
- Stylish kitchen with quality appliances and a breakfast bar
- Four bedrooms have built-in robes, ceiling fans and ensuite in main
- Bathroom has a separate bath and shower, additional w/c
- Air conditioning, tiles and shutters appointed throughout
- Beautifully maintained with scope to add personal touches

Price:

Price guide over \$765,000

**Stone Real Estate**

02 9824 1100  
**Liverpool**



SITE PLAN (NOT TO SCALE)

0 1 2 3 4 5

Scale in metres. Indicative only. Dimensions are approximate. All information contained herein is gathered from sources we believe to be reliable. However we cannot guarantee its accuracy and interested persons should rely on their own enquiries



4 Glen Osmond Crescent, Bossley Park

**McGrath**