



9 Mulgara Place BOSSLEY PARK, NSW

4 2 2

Modern single level family haven in a cul-de-sac

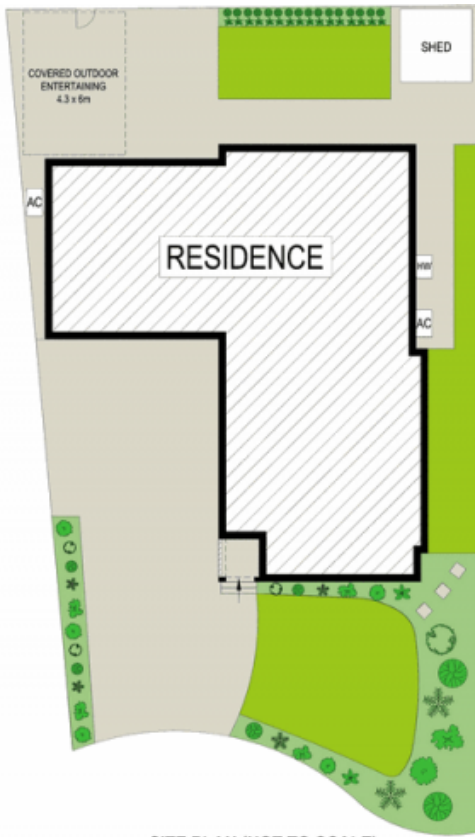
Showcasing a flowing single level layout with modern finishes and a generous amount of yard space, this well presented residence meets all the demands of family living. Its peaceful cul-de-sac address opens directly onto parkland at the rear.

- Large open living and dining, timber floors throughout
- Sleek CaesarStone kitchen boasts quality gas Kleenmaid appliances
- Breakfast island, soft close draws and cupboards, walk-in pantry
- Four carpeted bedrooms, all of which have built-in wardrobes
- Master bedroom provides a walk-in and ensuite bathroom
- Full main bathroom provides a separate bath and shower
- Superb alfresco entertaining and a perfect setting for kids
- Fenced exterior with pergola, garden shed, sunlit level lawns

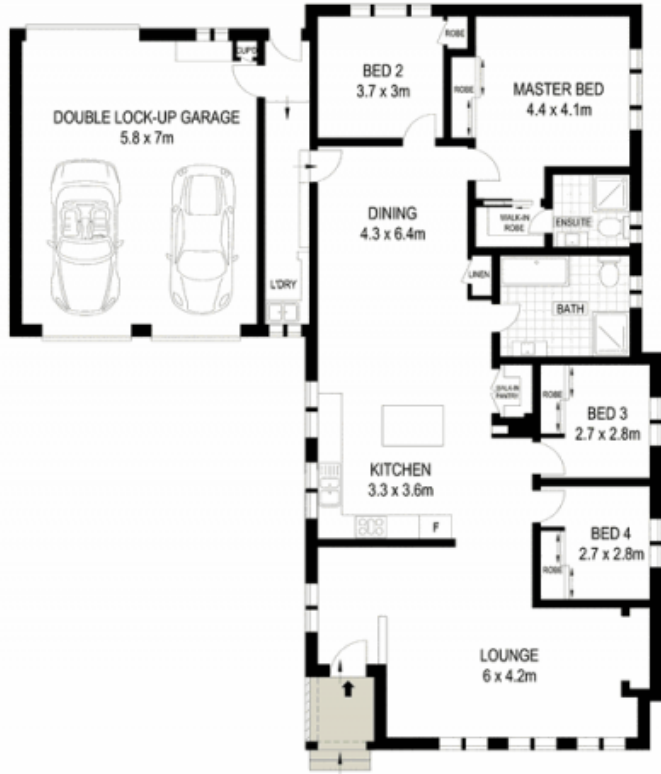
Price: Price guide over \$767,000

Stone Real Estate

02 9824 1100
Liverpool



SITE PLAN (NOT TO SCALE)



0 1 2 3 4 5

Scale in metres. Indicative only. Dimensions are approximate. All information contained herein is gathered from sources we believe to be reliable. However we cannot guarantee its accuracy and interested persons should rely on their own enquiries.

9 Mulgara Place, Bossley Park

McGrath