



22 Glen Elgin Crescent EDENSOR PARK, NSW



Single level family home with outdoor entertaining

Perfectly placed in a quiet street, this generous single level home provides comfortable family living and easy outdoor entertaining. It's set in an established neighbourhood moments to Edensor Park Plaza, a choice of schools and cafes, parks and clubs.

- Spacious open plan living/dining, separate family room
- Inviting in-ground pool with paved area, garden storage shed
- Expansive covered entertaining patio overlooking level lawns
- Modern gas kitchen with plentiful storage and breakfast bar
- Three well scaled bedrooms with built-ins and timber look flooring
- Family sized bathroom includes a spa tub and separate w/c
- Ducted air conditioning, alarm system, linen press, internal laundry
- Well presented facade with street appeal, solar panels

Price:

Price guide over \$650,000

Stone Real Estate

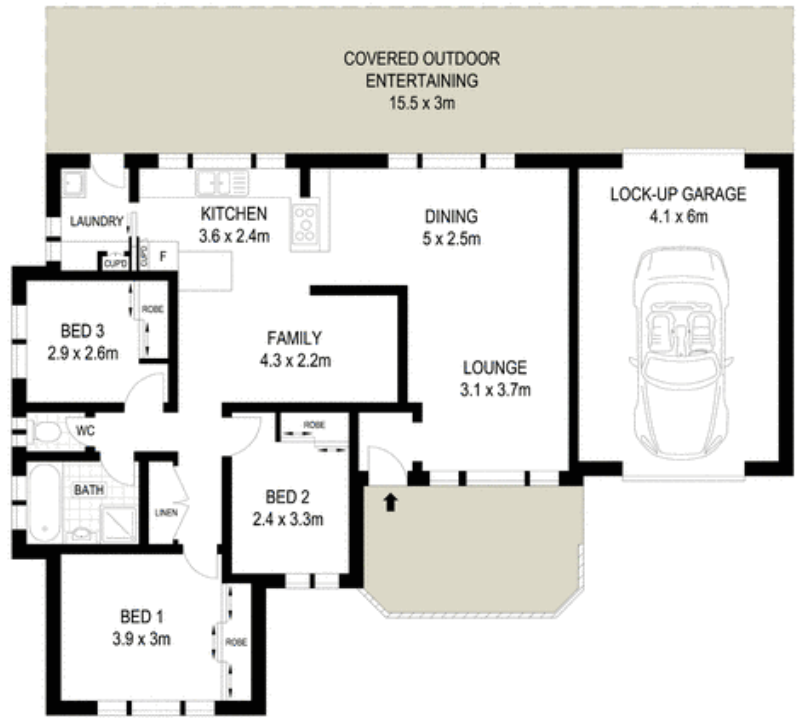
02 9824 1100
Liverpool



SITE PLAN (NOT TO SCALE)

0 1 2 3 4 5

Scale in metres. Indicative only. Dimensions are approximate. All information contained herein is gathered from sources we believe to be reliable. However we cannot guarantee its accuracy and interested persons should rely on their own enquiries



22 Glen Elgin Crescent, Edensor Park

McGrath