



26 Blacksmith Street GREENFIELD PARK, NSW



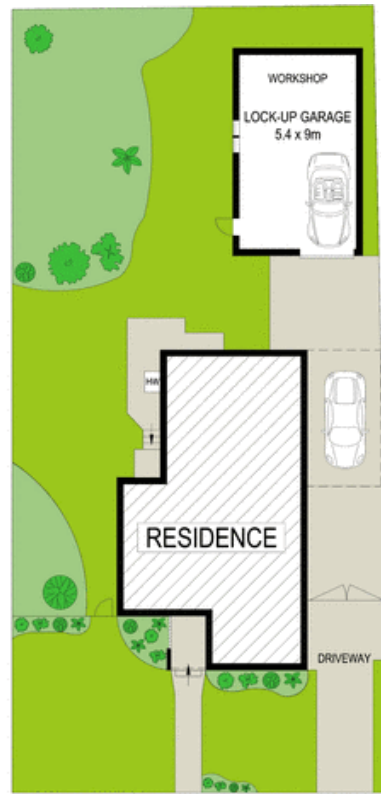
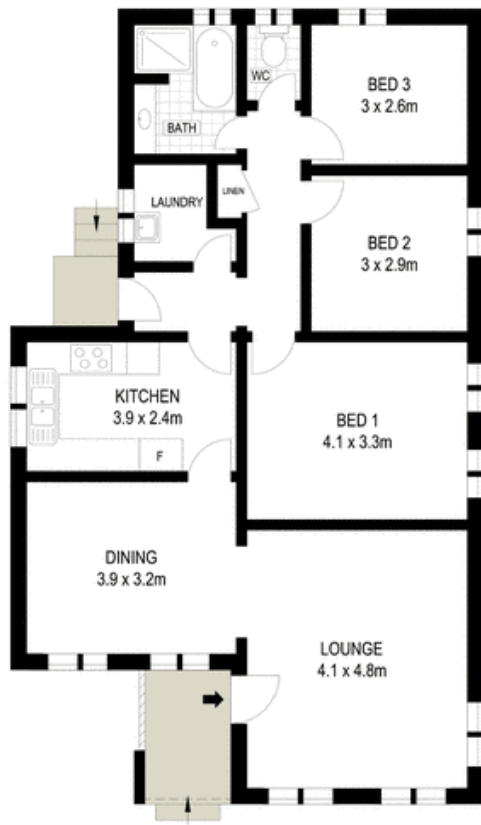
Tightly-held family home in convenient location

Exceptionally located within minutes of Greenfield Park Shopping Centre, this neat and tidy residence provides a superb first home for families and astute investors alike. Tightly-held by the one owner, it is placed close to public transport and schools.

- Original single level layout features L-shaped lounge/dining
- Enclosed child-friendly level backyard and easycare gardens
- Neat and tidy kitchen with ample cupboard storage/benchspace
- The three bedrooms are well proportioned
- Superb potential for in-law or guest accommodation (STCA)
- Exceptional investment prospect with great rental return
- Immediately liveable with scope to personalise to taste
- Side gate access, single lock-up garage, carport, workshop

Stone Real Estate

02 9824 1100
Liverpool



SITE PLAN (NOT TO SCALE)



Scale in metres. Indicative only. Dimensions are approximate. All information contained herein is gathered from sources we believe to be reliable. However we cannot guarantee its accuracy and interested persons should rely on their own enquiries.

26 Blacksmith Street, Greenfield Park

McGrath