

67 Swan Road EDENSOR PARK, NSW 4  2  2 

Spacious family entertainer with pool near amenities

An appealing sanctuary for a large family, this dual level residence provides a spacious haven with superb outdoor entertaining and casual/formal living spaces. It offers an ideal lifestyle opportunity close to Edensor Park shops, schools and transport.

- Generous family room with easycare tiled floors flows outside
- Light filled dining and lounge room plus casual meals area
- Covered outdoor entertaining area overlooks salt water pool
- Modern gas kitchen with stone benches and a dishwasher
- Bedrooms with built-ins, master has walk-in robe and ensuite
- Stylish bathrooms main features a separate bath and shower
- Skylight, new gutters, internal laundry with w/c, garden shed
- Air conditioning, security alarm, double gates/side access

Price: Price guide \$720,000 - \$792,000

Stone Real Estate

02 9824 1100
Liverpool

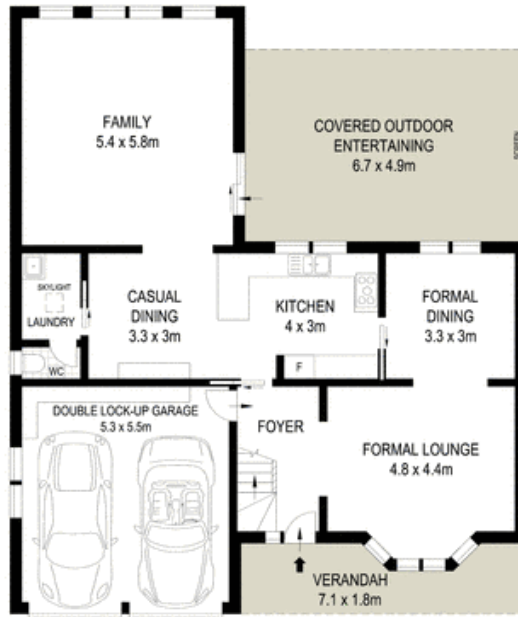


SITE PLAN (NOT TO SCALE)

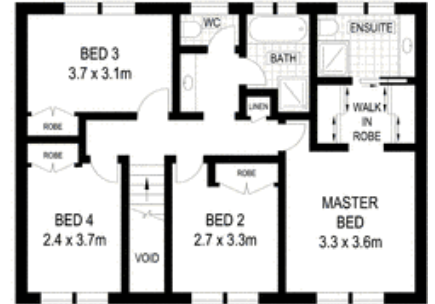
0 1 2 3 4 5

Scale in metres. Indicative only. Dimensions are approximate. All information contained herein is gathered from sources we believe to be reliable. However we cannot guarantee its accuracy and interested persons should rely on their own enquiries

67 Swan Road, Edensor Park



GROUND FLOOR



UPPER FLOOR



McGrath