



20 Gloucester Street BONNYRIGG HEIGHTS, NSW

4 

2 

1 

### Family entertainers' home with north to rear aspect

Designed to maximise its desirable north to rear aspect, this streamlined residence presents a family-friendly layout that extends onto a private outdoor entertaining area. It's conveniently located within a stroll of Bonnyrigg Plaza, schools and transport.

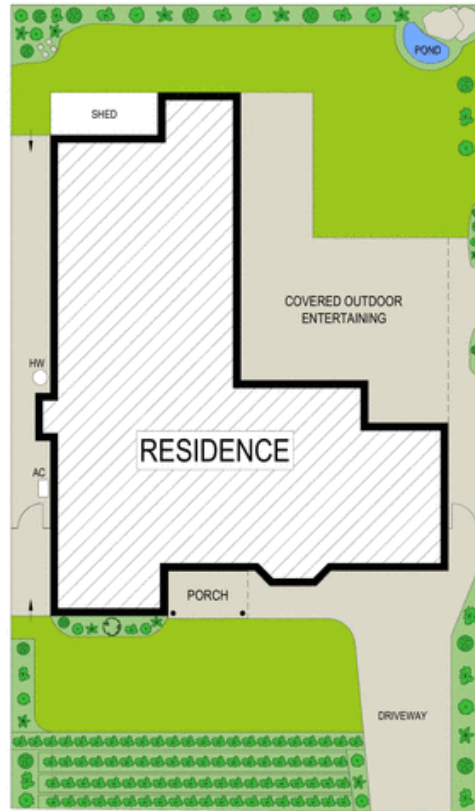
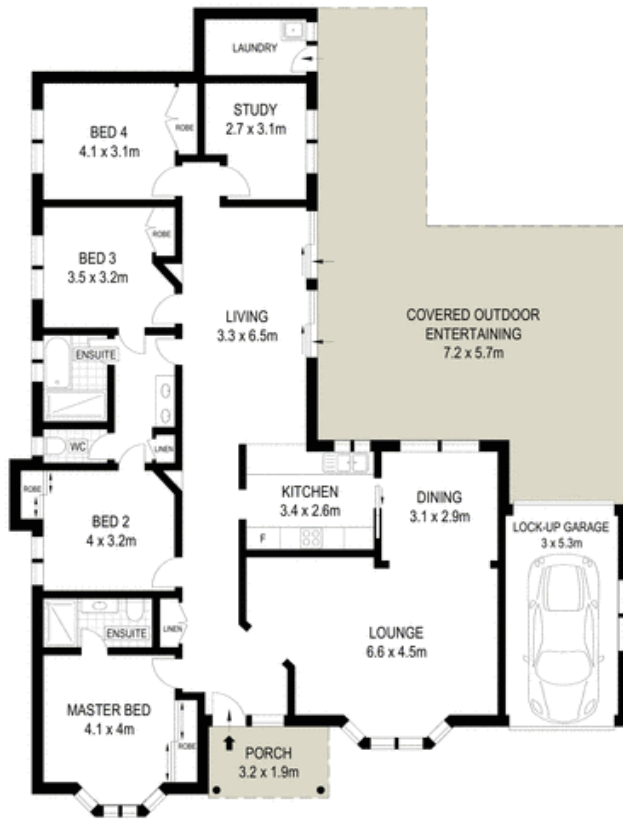
- Open plan living and dining space plus a separate lounge room
- All-weather terrace, landscaped garden with pond and fountain
- Well maintained kitchen features stainless steel appliances
- Spacious bedrooms have built-ins, two open to main bathroom
- Master bedroom fitted with built-ins and a chic shower ensuite
- Three way bathroom has a separate bath/shower, double vanity
- Study, ducted air conditioning, downlights, raked ceilings
- Freshly painted, irrigation system, large garden shed, alarm

**Price:**

Price guide \$660,000 - \$720,000

**Stone Real Estate**

02 9824 1100  
**Liverpool**



SITE PLAN (NOT TO SCALE)



0 1 2 3 4 5

Scale in metres. Indicative only. Dimensions are approximate. All information contained herein is gathered from sources we believe to be reliable. However we cannot guarantee its accuracy and interested persons should rely on their own enquiries.

20 Gloucester Street, Bonnyrigg Heights

**McGrath**