

STONE



4 Riverside Road LANSVALE, NSW

3 

1 

1 

Tightly-held waterside home overlooks Georges River

Set in serene surrounds, this charming waterfront home provides a spacious single level layout and boasts uninterrupted Georges River views. It's a unique lifestyle retreat on a 626sqm north facing block in a quiet cul-de-sac close to everyday necessities.

- Light filled lounge/family living area adjoins sitting room
- Inviting dining space features a fireplace and wide windows
- Beautiful natural outlook with a tranquil riverside backdrop
- Sunny entertaining verandah and easycare established garden
- Modern well equipped kitchen includes moveable island bench
- Practical bathroom, guests' powder room and separate laundry
- Bright airy bedrooms include two appointed with built-ins
- High ceilings, air conditioning, ceiling fans, solar panels

Price:

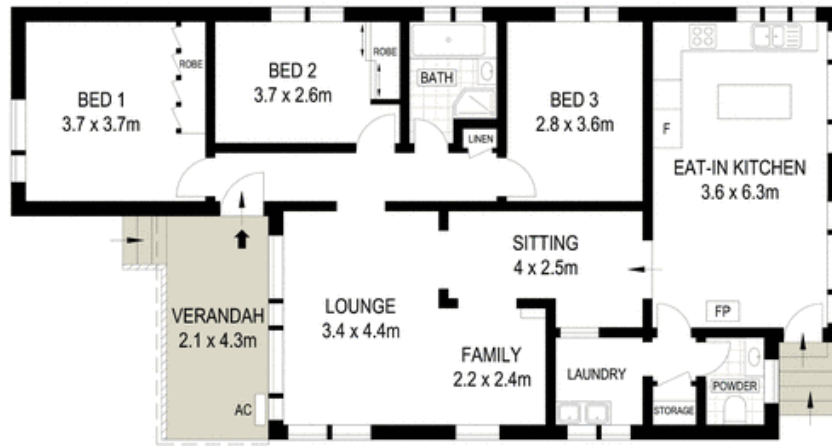
Price guide \$620,000 - \$682,000

Stone Real Estate

02 9824 1100
Liverpool



SITE PLAN (NOT TO SCALE)



Scale in metres. Indicative only. Dimensions are approximate. All information contained herein is gathered from sources we believe to be reliable. However we cannot guarantee its accuracy and interested persons should rely on their own enquiries



4 Riverside Road, Lansvale

McGrath