

4/76 Mountford Avenue GUILDFORD, NSW

2

2

1

### Stylish north facing apartment with two balconies

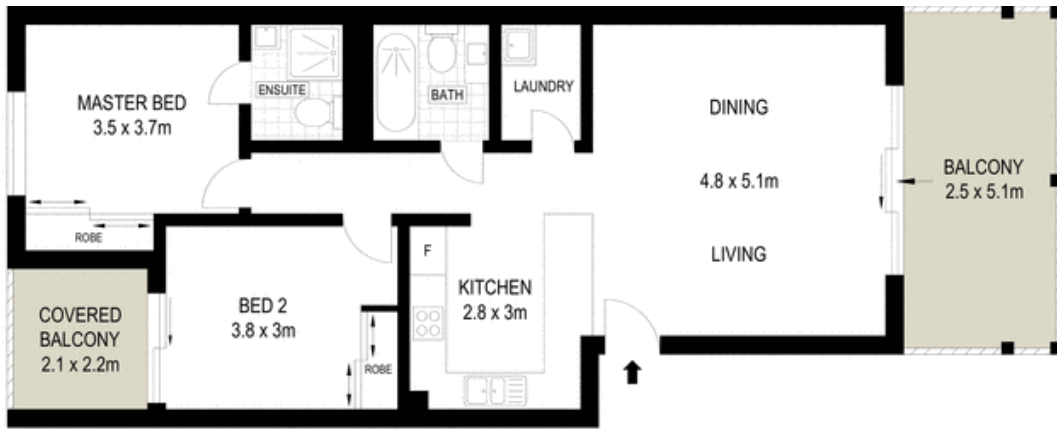
Embracing a prized north aspect, this stylish apartment features plenty of indoor/outdoor living space with dual alfresco areas and contemporary appointments. It's set in a modern block located within walking distance of shops and Guildford Station.

- Open plan living and dining area attracts abundant light
- Easy flow out to sun soaked all-weather entertainers' balcony
- Sleek granite kitchen has stainless steel gas appliances
- Master bedroom appointed with built-in robes and an ensuite
- Second bedroom enjoys built-in robes and a private balcony
- Full bathroom with quality fittings, internal laundry room
- Sleek contemporary floors, air conditioning and gas bayonet
- Smart entry into the local market with solid rental appeal

**Price:** \$482,000

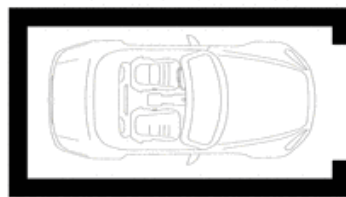
**Stone Real Estate**

02 9824 1100  
**Liverpool**



**SECOND FLOOR**

**SINGLE LOCK-UP GARAGE**



**BASEMENT**



Scale in metres. Indicative only. Dimensions are approximate. All information contained herein is gathered from sources we believe to be reliable. However we cannot guarantee its accuracy and interested persons should rely on their own enquiries.



4/76 Mountford Avenue, Guildford

**McGrath**