



16 Glenfern Crescent BOSSLEY PARK, NSW

5 

3 

2 

Exceptional family haven is ideal for home business

In an elevated position, this commanding residence boasts space, privacy and two desirable levels with approval for family day care use. It stands on a north facing 736sqm corner block near schools, shops, Club Marconi and St Thomas the Apostle Cathedral.

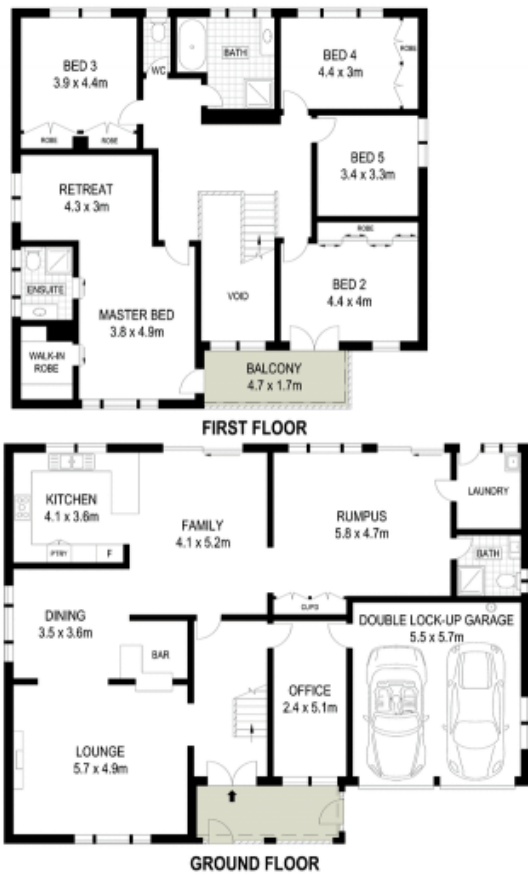
- Multiple zones include a casual living space and a rumpus
- Vast lounge/dining area bathed in beautiful northern light
- Covered alfresco entertaining area overlooks a swimming pool
- Extensive grounds with a barbecue and child-friendly gardens
- Sizeable kitchen offers a gas cooktop and timber cabinetry
- Generous bedrooms, tidy bathrooms, main includes a bath tub
- King size master with parents' retreat, walk-in robe, ensuite
- Balcony, office, ducted air conditioning/vacuum, intercom

Price:

Price guide \$800,000 - \$880,000

Stone Real Estate

02 9824 1100
Liverpool



McGrath

Scale in metres. Indicative only. Dimensions are approximate. All information contained herein is gathered from sources we believe to be reliable. However we cannot guarantee its accuracy and interested persons should rely on their own enquiries