



20/38 Marconi Road BOSSLEY PARK, NSW



Spacious and stylish low maintenance family home

Set in a delightfully family-friendly neighbourhood, this graceful home offers an inspiring combination of low maintenance living and entertaining. Spacious and stylish, it's conveniently near Stockland Mall, Club Marconi and mere footsteps to local buses.

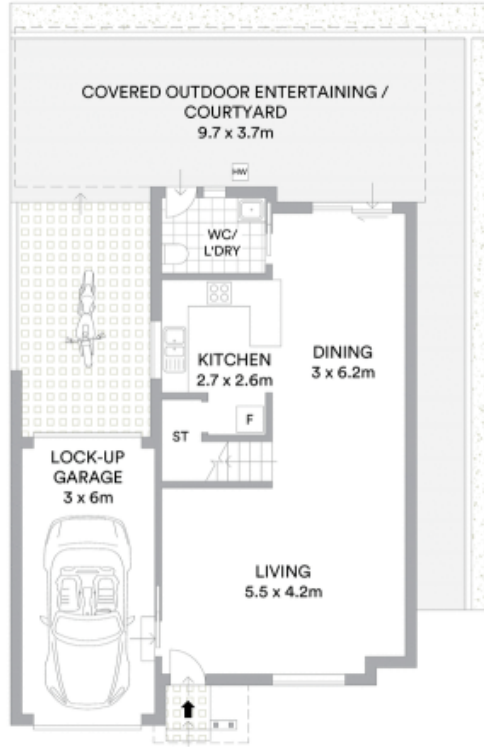
- Immaculate modern family home spanning two generous levels
- Combined lounge dining opens to vast undercover entertaining
- Luxe stainless gas kitchen with stone benches, walk-in pantry
- Three upstairs bedrooms all with ceiling fans and built-ins
- Bright and spacious master complemented with air conditioning
- Sleek centrally positioned main bathroom and guest facilities
- Alarm system, internal laundry plus generous linen cupboard
- Remote controlled lock-up garage, additional parking/storage

Price:

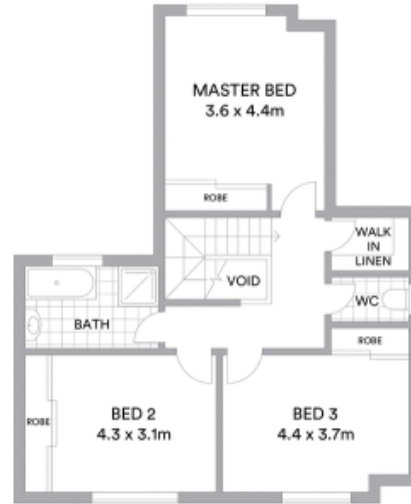
Price \$580,000

Stone Real Estate

02 9824 1100
Liverpool



GROUND LEVEL



UPPER LEVEL



McGrath

Scale in metres. Indicative only. All information contained herein is obtained from sources we believe to be accurate. We cannot guarantee its accuracy. Interested persons should make and rely on their own enquiries