



206 Neville Street Smithfield, NSW

3 

1 

3 

Vast north to rear home ripe for redevelopment

An enticing opportunity in a sought-after address, this tightly-held generous full brick residence offers immense redevelopment potential on a vast 828.3sqm block (STCA). Graced with a sun washed north to rear aspect, it's close to parks, buses and shopping choices.



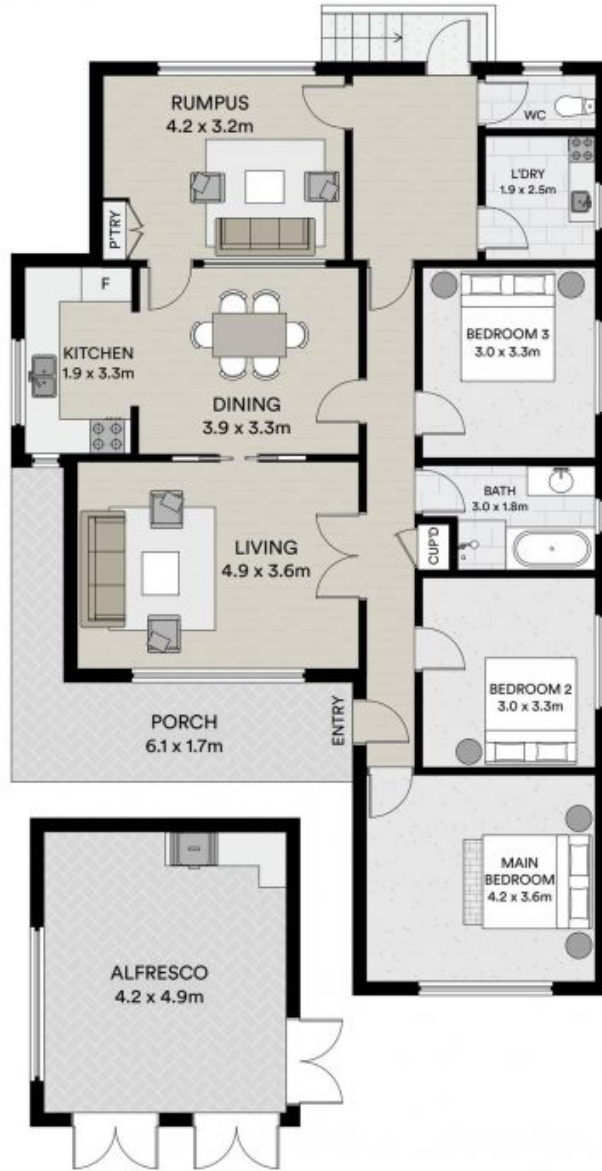
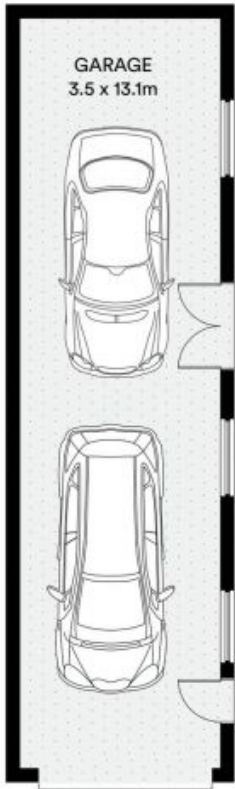
Frank Bartolone

0411 477 758



Angela McInerney

0435 348 141



All information contained in this document is from sources we believe to be accurate, however we cannot guarantee its accuracy. Interested persons should make and rely on their own enquiries in relation to measurements, dimensions, layout, furniture and descriptions.

INTERNAL AREA: 177M²
EXTERNAL AREA: 642M²
LAND SIZE: 819M²