



12/57-59 Lachlan Street Warwick Farm, NSW



### Contemporary third floor apartment provides easycare lifestyle

Embracing leafy parkland outlooks, this stylishly presented two bedroom apartment presents an excellent opportunity for low maintenance contemporary living. It's a short walk to Westfield Liverpool, Liverpool station and neighbouring Pioneer Memorial Park.



**Angela McInerney**

0435 348 141

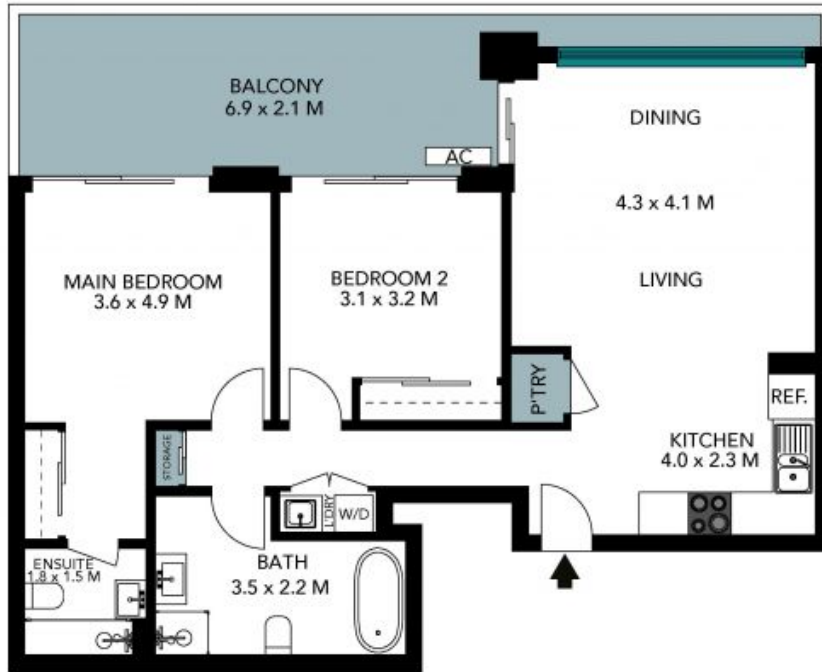


**Frank Bartolone**

0411 477 758

12/57 Lachlan Street  
Warwick Farm

STONE



The floor plan is not to scale, measurements are indicative and in metres. Exterior elements are not in position. Plans should not be relied on, interested parties should make and rely on their own enquiries. All other information provided has been collected from reliable sources but cannot be guaranteed for accuracy.