



12/16-18 Orchard Road Beecroft, NSW

3 2 2

## Peaceful townhome in a perfect location, zoned for Carlingford High

Superbly situated in the serene 'Orchard Grove' development and surrounded by lush greenery, this spacious three-bedroom townhome offers desirable family or downsizing dimensions complemented by low maintenance, lock-and-leave ease. Its prized corner setting affords a generous outdoor domain for exceptionally private entertaining, matched by tastefully updated interior spaces with a host of quality inclusions. Proximity to everything defines this peaceful address, which delivers Beecroft station, village shops and delights within approximately 2.6km.

**Price:** Sold by Kevin Dearlove  
**Council Rates:** \$236.17 p/q  
**Water Rates:** \$170.90 p/q  
**Strata Rates:** \$1,706.58 p/q



**Kevin Dearlove**

0403 338 302

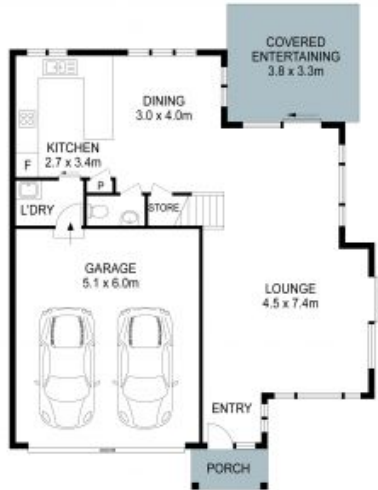


**Leo Li**

0404 917 188

# 12/16 Orchard Road, Beecroft

3 2.5 2 248m<sup>2</sup>



GROUND FLOOR



FIRST FLOOR



SITE PLAN

THIS IS AN ARTIST'S IMPRESSION - ALL DIMENSIONS, LAYOUTS AND TREES ARE APPROXIMATE  
ALL INTERESTED PARTIES SHOULD MAKE AND RELY ON THEIR OWN ENQUIRIES

