



118 Tryon Road East Lindfield, NSW



Tightly-held mid-century residence steeped in privacy and tranquillity

Warm and inviting with breathtaking panoramic views over Garigal National Park, this cherished mid-century residence has been lovingly held and impeccably maintained by the same family for over 50 years. Now, it's ready to inspire a new generation and create another treasured legacy.



Adette Cao

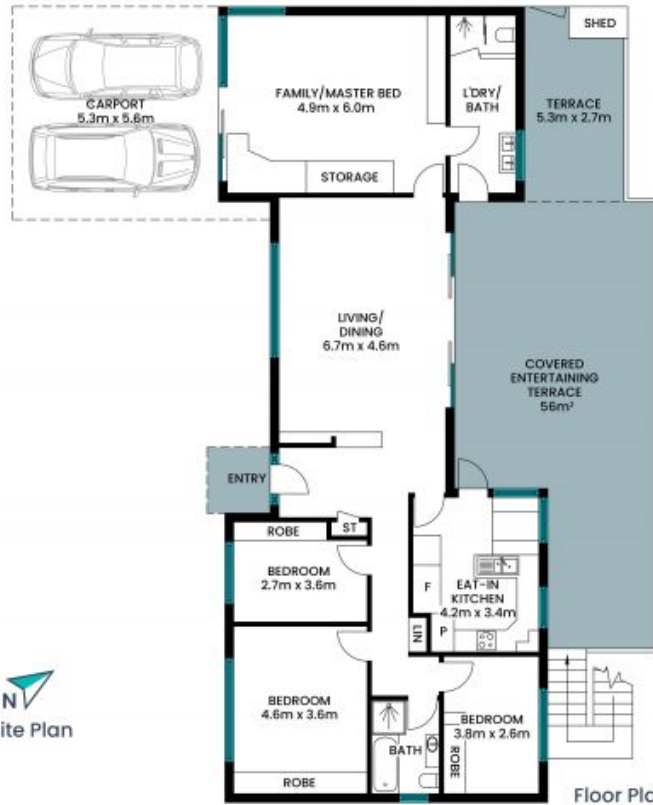
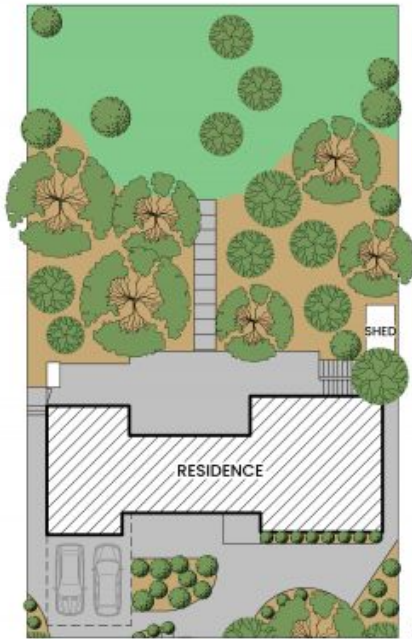
0433 412 196



Steven Kourdis

0402 555 675

118 Tryon Road
East Lindfield



The site plan and floor plan are not to scale; measurements are indicative and in metres. Bushes and trees are placed for illustration purposes. Plans should not be relied on. Interested parties should make and rely on their own enquiries. All other information provided has been collected from reliable sources but cannot be guaranteed for accuracy.