



2/182 Rawson Street Kurri Kurri, NSW



Entry Level

Nestled just a block and a half from Kurri's town centre resides this entry one-bedroom unit perfect for first-home buyers, downsizers or investors. Inside you'll find generously sized rooms: a dedicated living room, large functional kitchen and the bedroom is fitted with built-ins. Boasting the largest of the outdoor areas and a north facing porch where you can enjoy your morning coffee.

Price: \$320,000



Renee Bean-Wyper

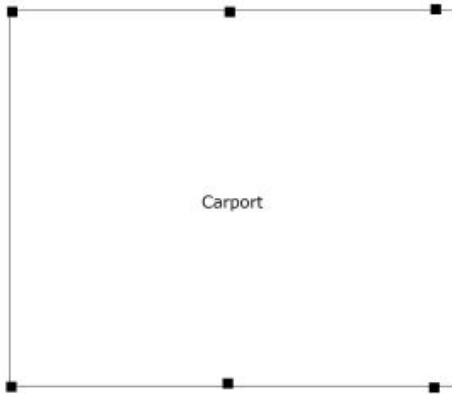
0403 325 076



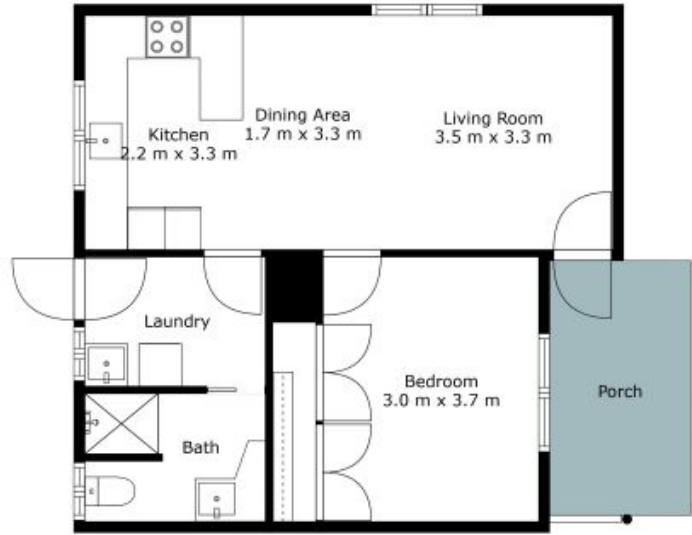
Jorja Pauling

0435 930 665

Proposed Lot 1,
182 Rawson St
Kurri Kurri



Floor 1



Floor 2

The site plan and floor plan are not to scale; measurements are indicative and in metres. Bushes and trees are placed for illustration purposes. Plans should not be relied on, interested parties should make and rely on their own enquiries. All other information provided has been collected from reliable sources but cannot be guaranteed for accuracy.

