

STONE



STONE



STONE



STONE



STONE

2/25 Carlingford Road Epping, NSW



### Spacious living, unbeatable convenience

Nestled within the boutique Boronia Gardens 'Hibiscus' complex, this elevated ground floor, full brick unit in a secure block with low strata is a highly compelling option for those seeking generous living space within approx. 500m from Epping Station, shops and schools. Its spacious 129sqm total size boasts two large, robed bedrooms and balconies, a full bathroom and large internal laundry plus a 2nd w/c guest toilet, all in an easy living package set within lush resort-style gardens, in an ultra-convenient location.

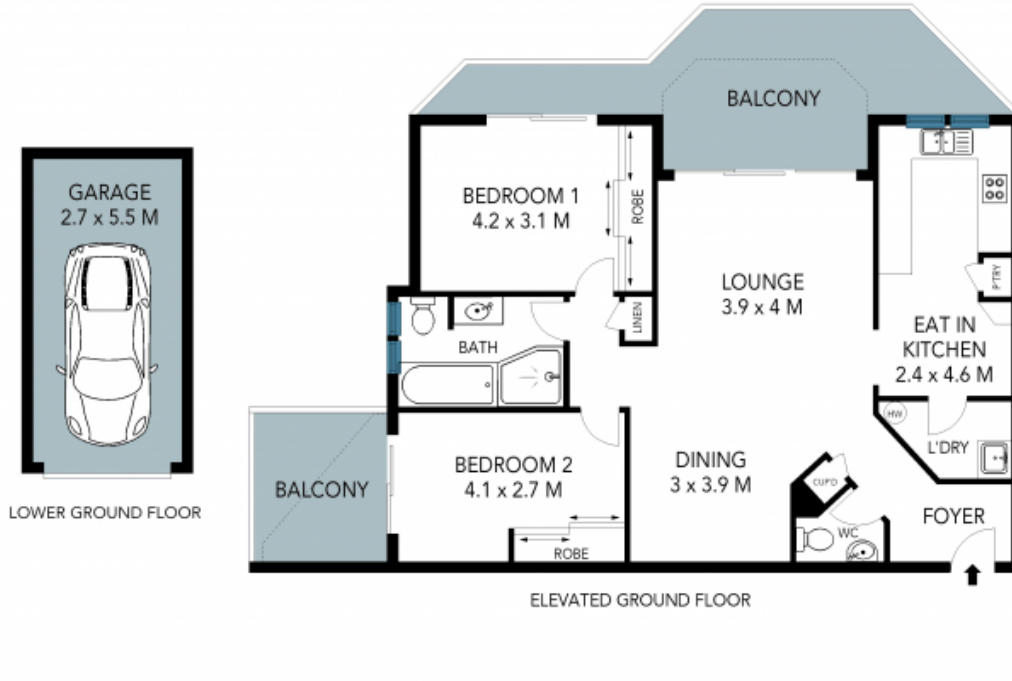
**Price:** Sold \$852,000  
**Council Rates:** \$326.00 p/q  
**Water Rates:** \$178.00 p/q  
**Strata Rates:** \$956.00 p/q



**Vincent Goh**

0412 316 797

2/25 Carlingford Road,  
Epping



The site plan and floor plan are not to scale; measurements are indicative and in metres. Bushes and trees are placed for illustration purposes. Plans should not be relied on. Interested parties should make and rely on their own enquiries. All other information provided has been collected from reliable sources but cannot be guaranteed for accuracy.