



30 Prices Road Douglas Park, NSW 4 2 2

Space, lifestyle & location

Welcome to Douglas Park, this property is a rare 7.87-acre lifestyle property offering cleared land ideal for a hobby farm, grazing, or simply enjoying your own wide-open space. Set in a peaceful yet highly convenient location, this property also features a dam, perfect for livestock or garden irrigation.

Price: \$2,250,000- Â \$2,350,000

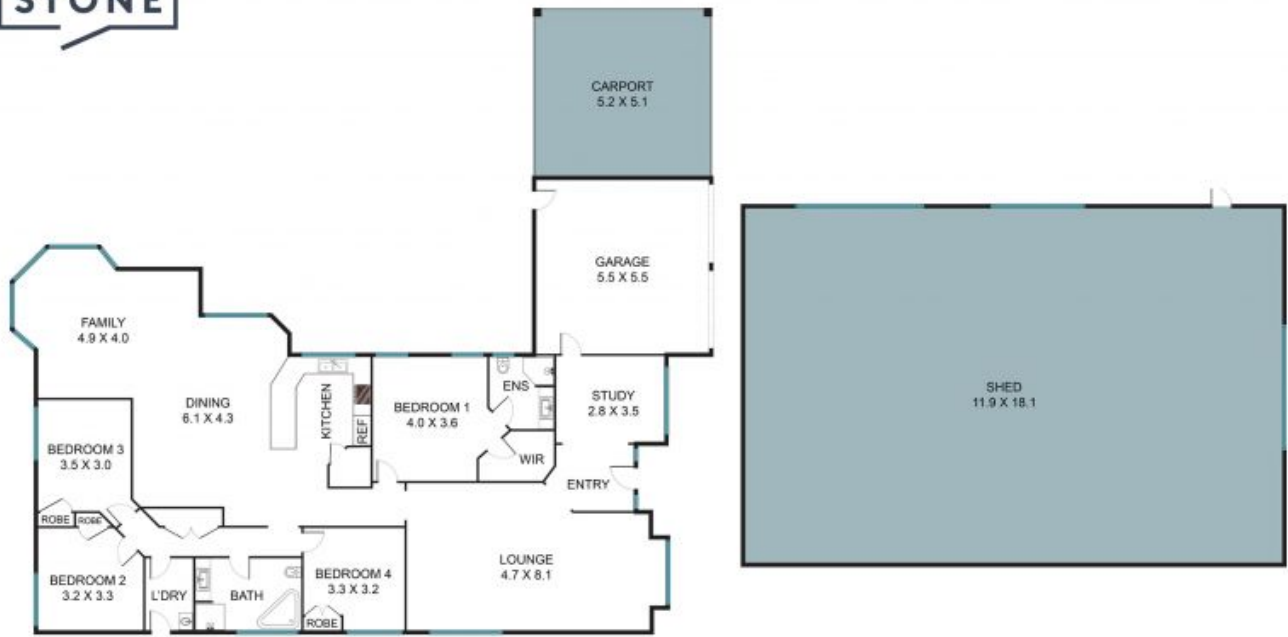


Gary Luke
0418 451 105



Kaitlin Hall
0404 529 516

STONE



30 Prices Rd, Douglas Park NSW 2569



The floor plan is not to scale, measurements are in metres. Exterior elements are not in position.
Plans should not be relied on. Interested parties should make and rely on their own enquiries.
All other information provided has been collected from reliable sources but cannot be guaranteed for accuracy.