



3 Eugene Street Boria Heights, QLD

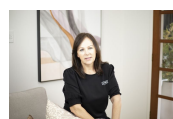


1,012m2, 2 Driveways, One Incredible Opportunity!

Set on a 1,012m² block, this feature-packed family home delivers unbeatable space, stylish living, practical functionality and plenty of room to grow, there's even space to add a granny flat (STCA). This is a home that truly has space for everything and everyone.

Price:

UNDER CONTRACT



Leanne Gunn

0413 817 092



Claire Franklin

0430 438 889



Floor Plan



Site Plan

Approx. Floor Area | Internal 185 m² | External (Covered) 53 m² | Shed 63 m² | Total 301 m² | Lot 1,012 m²

Unless otherwise stated, all dimensions are in metres. Stair arrows indicate the upward direction. This plan and information contained within is for illustrative purposes only and not guaranteed to be exact. Interested parties should make their own enquiries.

