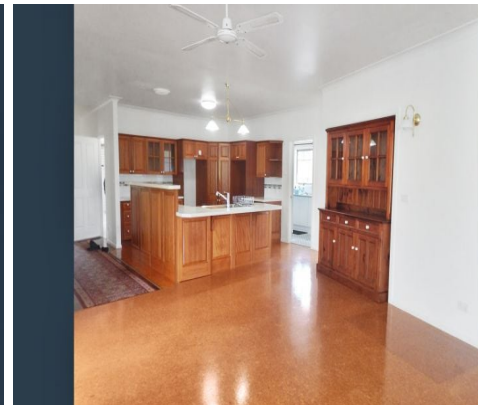




STONE

Apply Now! Scan this QR code with your phone or enter the following into your browser: <https://t-app.com.au/stoneoffsharbour>



161 First Avenue Sawtell, NSW



Coastal Family Retreat ? Just Minutes from Sawtell

Enjoy relaxed coastal living in this beautifully presented 4-bedroom, 2-bathroom family home, ideally located just a 1-minute drive to Sawtell's vibrant main street. With local bars, cafes, restaurants, and beaches at your fingertips, this is your opportunity to secure your slice of paradise.

Price: \$720.00 pw

Available Date: 15/08/2025



Felicity Moore

0467 970 317



Scarlett Mackay

0428 277 341