



1710/41-45 Waitara Avenue Waitara, NSW



### Executive apartment overlooking Mark Taylor Oval

A quiet, well-proportioned, light apartment featuring a very generous terrace overlooking Mark Taylor Oval, a fantastic children's playground, the impressive PCYC gym with lots of organised activities available including local tennis courts and popular community parkland will immediately impress.

**Price:** \$600 Per week

**Bond:** \$2,400

**Available Date:** 30/07/2025

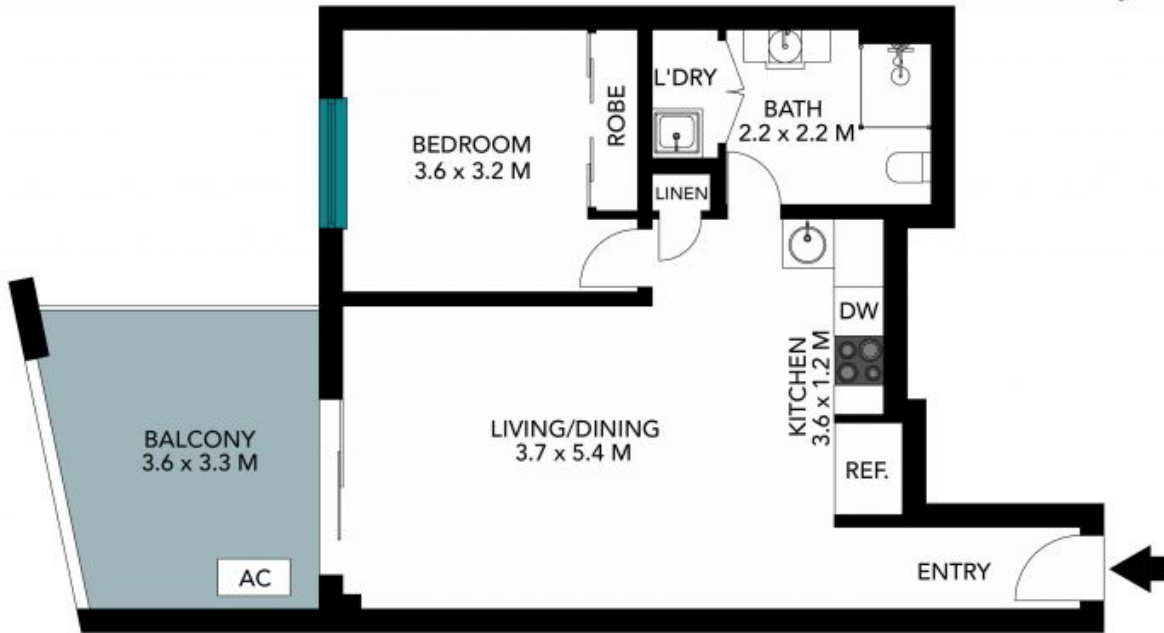


**Matthew Mey**

0456 712 478

1710/41-45 Waitara Ave  
Waitara

STONE



The floor plan is not to scale; measurements are indicative and in metres. Exterior elements are not in position. Plans should not be relied on. Interested parties should make and rely on their own enquiries. All other information provided has been collected from reliable sources but cannot be guaranteed for accuracy.

1710/41-45 Waitara Ave  
Waitara

STONE



The floor plan is not to scale; measurements are indicative and in metres. All features included in this 3D plan are for inspiration purposes only. This is not an exact replica of the property or the position of exterior elements. Plans should not be relied on. Interested parties should make and rely on their own enquiries.