

19/75-77 Anzac Avenue West Ryde, NSW



North-Facing Two-Bedroom in Prime Location

Peacefully positioned at the rear of a well-maintained security complex, this light-filled, north-facing two-bedroom apartment is a rare gem - one of the very few apartments across Sydney with windows on all four sides, ensuring exceptional natural light and ventilation throughout the day.

Council Rates: \$350.90 p/q

Strata Rates: \$857.15 p/q



Juliet (Jiangmin) Chen

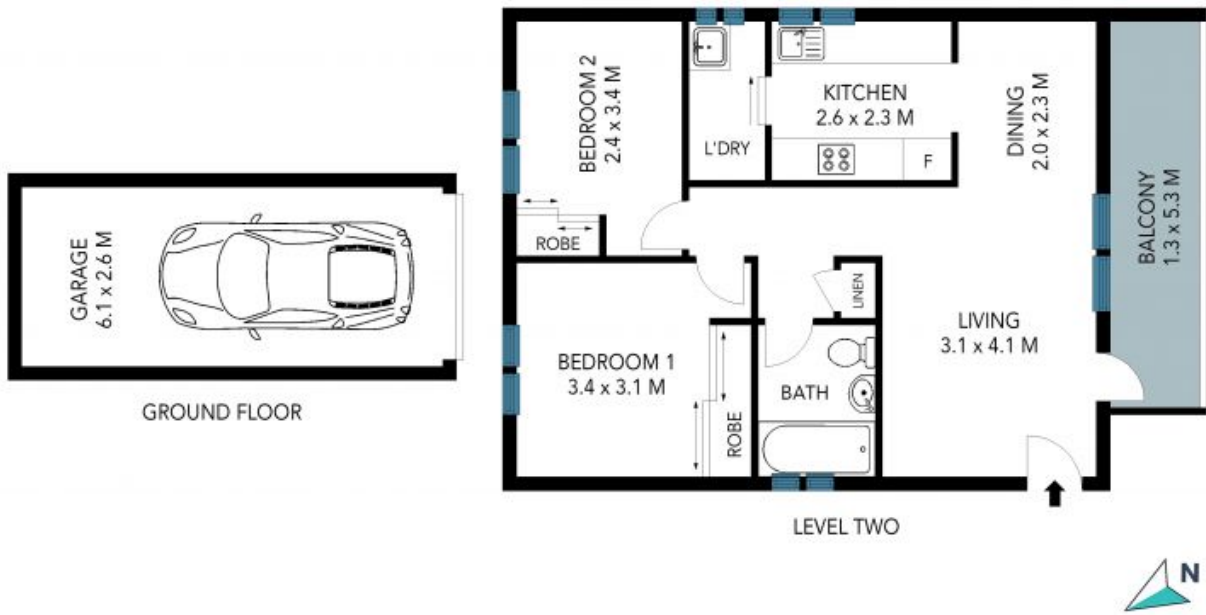
0408 997 997



Team Juliet

0466 907 733

19/75-77 Anzac Avenue,
West Ryde



The site plan and floor plan are not to scale; measurements are indicative and in metres. Bushes and trees are placed for illustration purposes. Plans should not be relied on. Interested parties should make and rely on their own enquiries. All other information provided has been collected from reliable sources but cannot be guaranteed for accuracy.