

10F/19-21 George Street North Strathfield, NSW 2  2  1 

Stylish Two-Bedder in the Popular 'Strathaven' Complex

Located on the second-floor of the 'Strathaven' complex, this well-presented apartment offers a fantastic combination of space, style and low-maintenance living. With generous interiors and access to resort-style facilities, it's an ideal opportunity for first homebuyers, downsizers or investors alike. Set within a secure and well-maintained building, this home is just a short stroll to North Strathfield train station, the Bakehouse Quarter, local parks and everyday amenities.

Price: \$820,000
Council Rates: \$263.75 p/q
Water Rates: \$177.93 p/q
Strata Rates: \$1,050.50 p/q



Phillip Massa

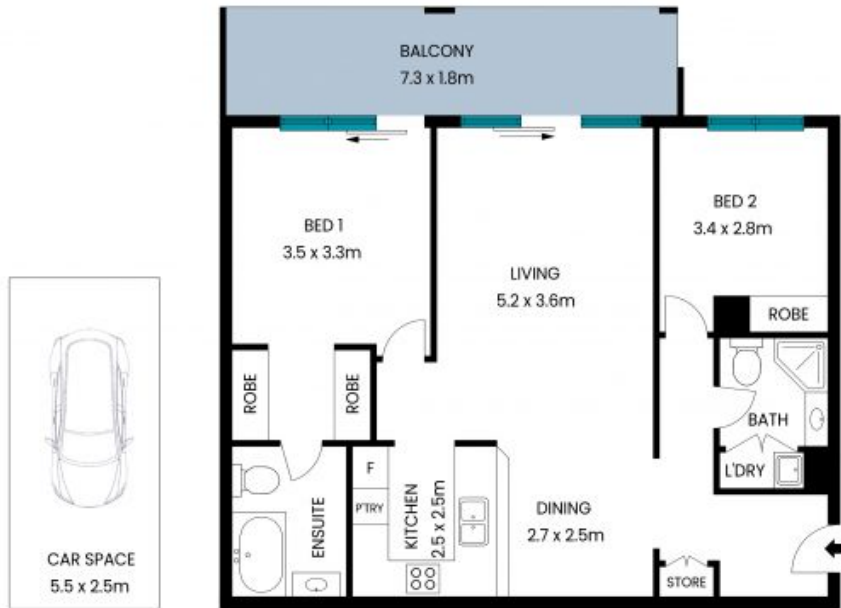
0411 173 929



Jessica (Loh) Campos

0412 103 338

10F/19-21 George Street
North Strathfield



All measurements are in meters. This plan is for reference only, and the dimensions are approximate. The information provided is sourced from what is believed to be reliable, but we do not take responsibility and disclaim all liability for any errors, inaccuracies, or misstatements. Interested parties should conduct their own inquiries.

