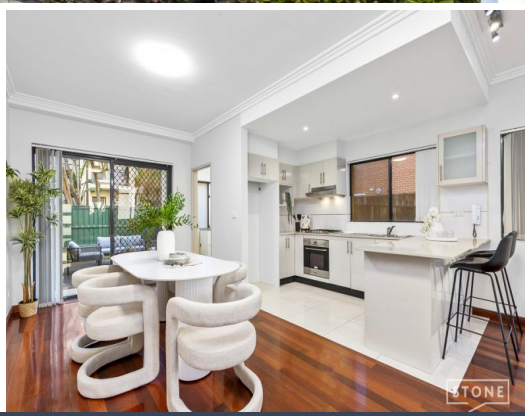




SOLD
Juliet Chen
0408 997 997



3/165 Carlingford Road Epping, NSW

3 2 2

Elegant Full-Brick Townhouse in Premier Location

Set within a highly regarded boutique complex in the heart of Epping, this stylish tri-level full-brick townhouse offers a harmonious blend of modern living, abundant natural light, and exceptional convenience. With a thoughtfully designed layout the home captures a sense of privacy and openness that's perfect for relaxed family living.

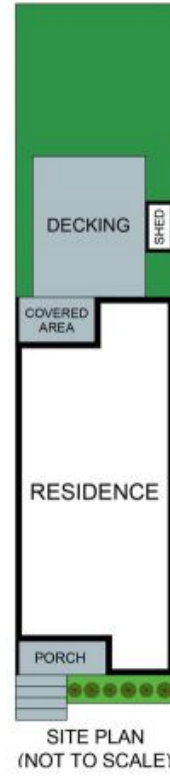
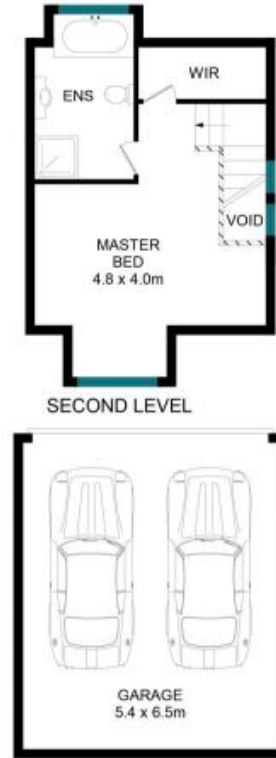
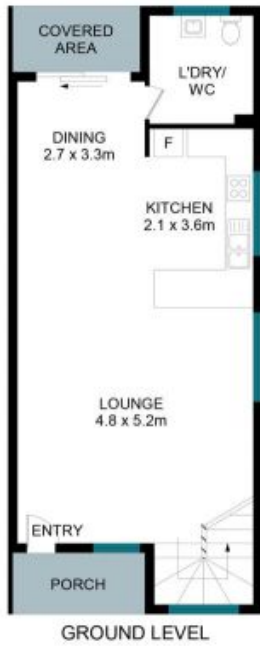
Price: Contact Agent



Juliet (Jiangmin) Chen
0408 997 997



Mary Song
0470 227 775



The floor plan is not to scale; measurements are indicative and in metres. Exterior elements are not in position. Plans should not be relied on. Interested parties should make and rely on their own enquiries.

3/165 Carlingford Road, Epping

STONE

