

1/198 Booker Bay Road Booker Bay, NSW



Modern apartment, beachfront complex

Modern apartment in a beachfront complex ideally located close to shops, transport and restaurants. - Stroll to Ettalong Beach town centre, Palm Beach Ferry Wharf, cafes, restaurants and cinema.

Price: \$500 p/week

Available Date: 14/08/2025



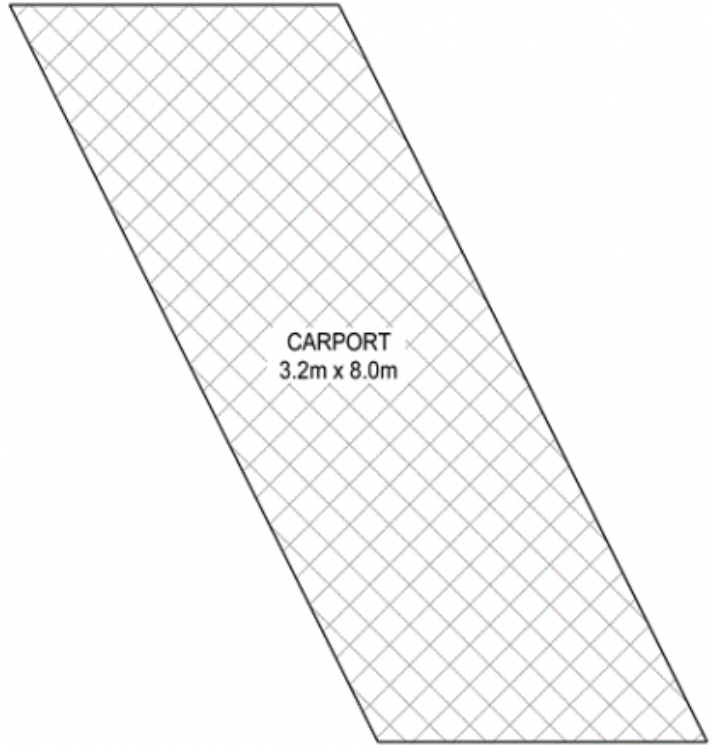
Lee Summers

0491 213 757

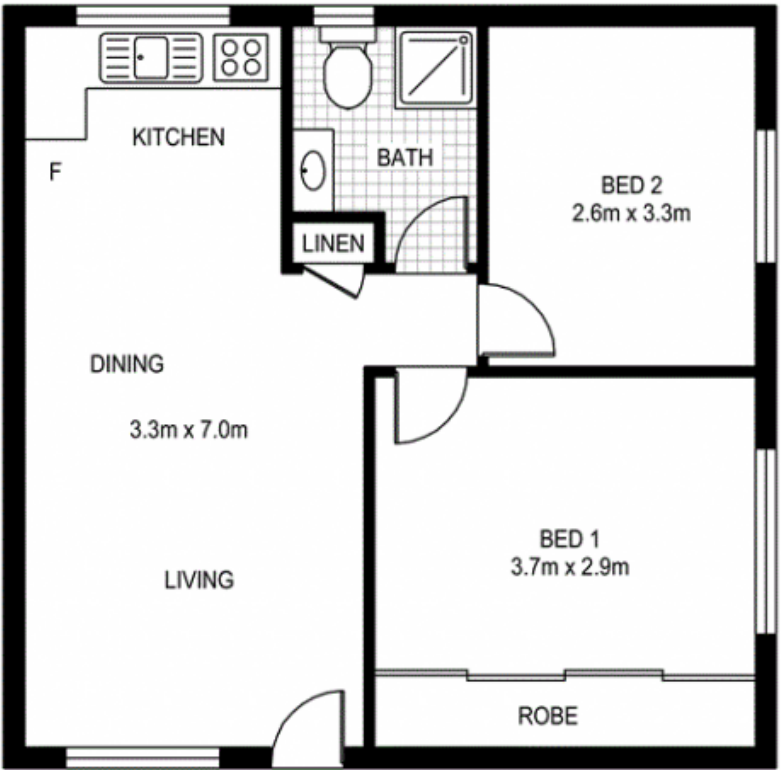


Leasing Team

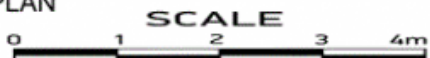
02 4369 6000



CARPORT



GROUND FLOOR PLAN



1/198 BOOKER BAY ROAD, BOOKER BAY

Disclaimer: We have obtained all information in this document from sources we believe to be reliable; however, we cannot guarantee its accuracy. Prospective purchasers are advised to carry out their own investigations

Total Approximate Area : 73 sq.m.