



28 Snapper Crescent Throsby, ACT

4 2 2

Spacious Single-Level Living Retreat

Designed for contemporary family living, this beautifully appointed home in Throsby delivers the perfect combination of space, comfort, and lifestyle functionality. Thoughtfully laid out across a single level, the home features multiple living zones, a versatile floorplan, and dual alfresco spaces for seamless indoor-outdoor enjoyment.

Price: SOLD - \$1,152,000



Shaye Davies

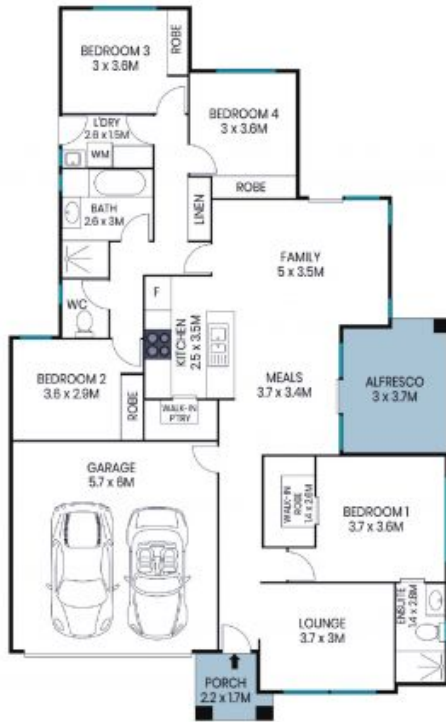
0459 140 665



Jess Smith

0410 125 475

28 Snapper Crescent
Throsby



Site Plan



The site plan and floor plan are not to scale; measurements are indicative and in metres. Bushes and trees are placed for illustration purposes. Plans should not be relied on. Interested parties should make and rely on their own enquiries. All other information provided has been collected from reliable sources but cannot be guaranteed for accuracy.

28 Snapper Crescent
Throsby



The floor plan is not to scale; measurements are indicative and in metres. All features included in this 3D plan are for inspiration purposes only. This is not an exact replica of the property or the position of exterior elements. Plans should not be relied on. Interested parties should make and rely on their own enquiries.