



14 Lamonerie Way Thrumster, NSW

3 1 2 2

Stylish Dual Occupancy with Flexibility and Comfort

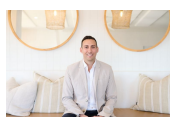
This brand new duplex offers a modern low-maintenance lifestyle with quality finishes and practical design. Ideal for families, downsizers or investors, the home combines comfort, style, and easy living in one of the region's fastest-growing communities.

Price: \$805,000



David Geary

0413 681 125



Nathan Owen

0422 144 720

14A Lamonnerie Way
Thrumster

STONE



Internal Living: 199 sqm
External Living: 15 sqm



The floor plan is not to scale; measurements are indicative and in metres. All features included in this 3D plan are for inspiration purposes only. This is not an exact replica of the property or the position of exterior elements. Plans should not be relied on. Interested parties should make and rely on their own enquiries.

14A Lamonerie Way
Thrumster

STONE



Internal Living: 199 sqm
External Living: 15 sqm

The floor plan is not to scale, measurements are indicative and in metres. Exterior elements are not in position. Plans should not be relied on. Interested parties should make and rely on their own enquiries. All other information provided has been collected from reliable sources but cannot be guaranteed for accuracy.