



5 Ibsen Place Wetherill Park, NSW

4 3 2

Sold by Frank Bartolone

Embracing a sunny north to rear aspect from a 553.6sqm block in a coveted position, this expansive home presents a spectacular opportunity for you to add value. It's a walk to buses, reserves, shops and eateries while moments from Greenway Wetherill Park.



Frank Bartolone

0411 477 758



Angela McInerney

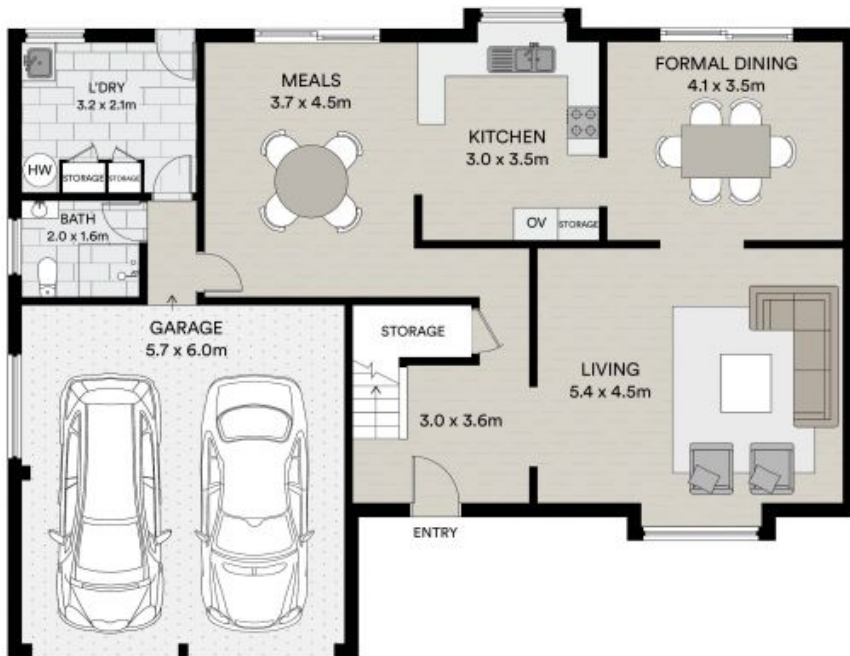
0435 348 141



UPPER FLOOR



IBSEN PLACE



GROUND FLOOR



All information contained in this document is from sources we believe to be accurate, however we cannot guarantee its accuracy. Interested persons should make and rely on their own enquiries in relation to measurements, dimensions, layout, furniture and descriptions.

INTERNAL AREA: 223M²
 EXTERNAL AREA: 331M²
 LAND SIZE: 554M²