



326 The Parkway Bradbury, NSW 4 2 1

Immaculate family living opposite Parkland

Perfectly positioned in a sought-after pocket of Macarthur, this beautifully maintained four-bedroom home is set on a generous 632m² block directly opposite parkland-ideal for dog walks, kids to play, or simply to enjoy the outlook. From its lush, manicured gardens to its fully renovated interiors, this home has been lovingly cared for and is ready to impress.

Price: \$1,030,000



Gary Luke

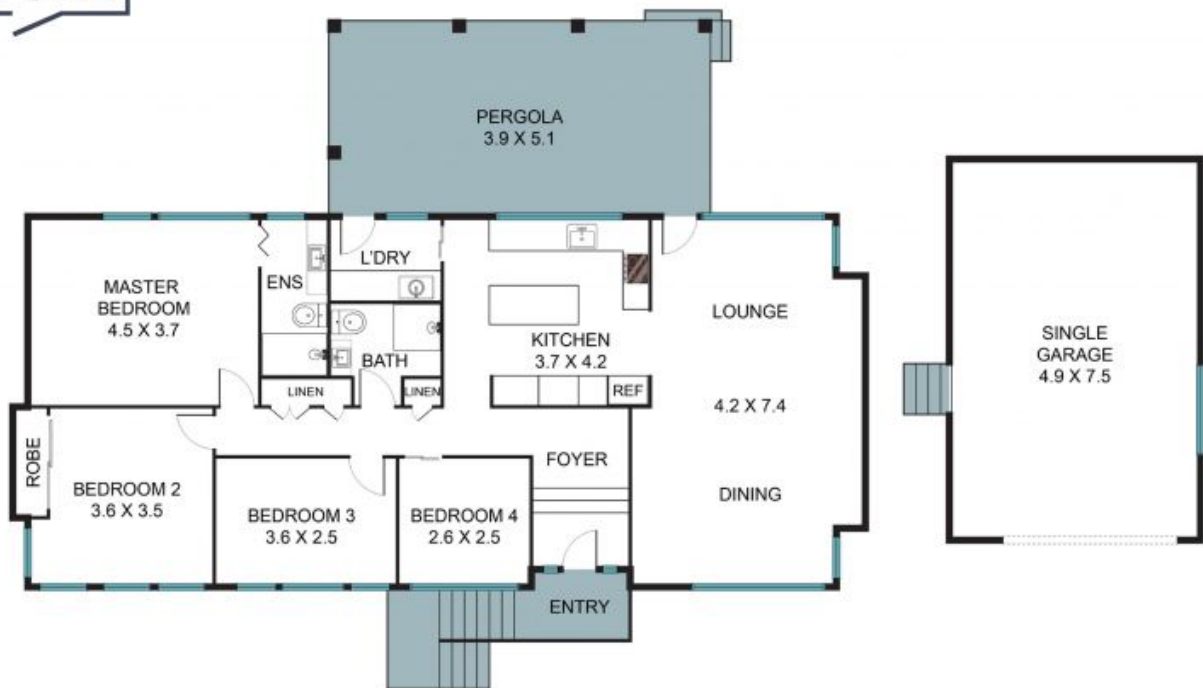
0418 451 105



Kaitlin Hall

0404 529 516

STONE



326 The Pkwy, Bradbury NSW 2560



The floor plan is not to scale, measurements are in metres. Exterior elements are not in position.
Plans should not be relied on. Interested parties should make and rely on their own enquiries.
All other information provided has been collected from reliable sources but cannot be guaranteed for accuracy.