

18B/5-29 Wandella Road Miranda, NSW 2 1 1

Top floor comfort meets resort lifestyle

Set in a highly sought after complex, this immaculately presented, sun drenched, top floor apartment totalling 114sqm approx ticks all the boxes for first home buyers, downsizers or investors looking for comfort, style and convenience. Enjoy relaxed, easy living with access to resort style amenities, including indoor and outdoor pools, sauna and a cabana with BBQ area, ideal for entertaining or unwinding year-round. Situated within short proximity to Westfield Shopping Centre, schools, station and parks.

Price: \$720,000
Council Rates: \$400.20 p/q
Water Rates: \$172.83 p/q
Strata Rates: \$1,237.35 p/q

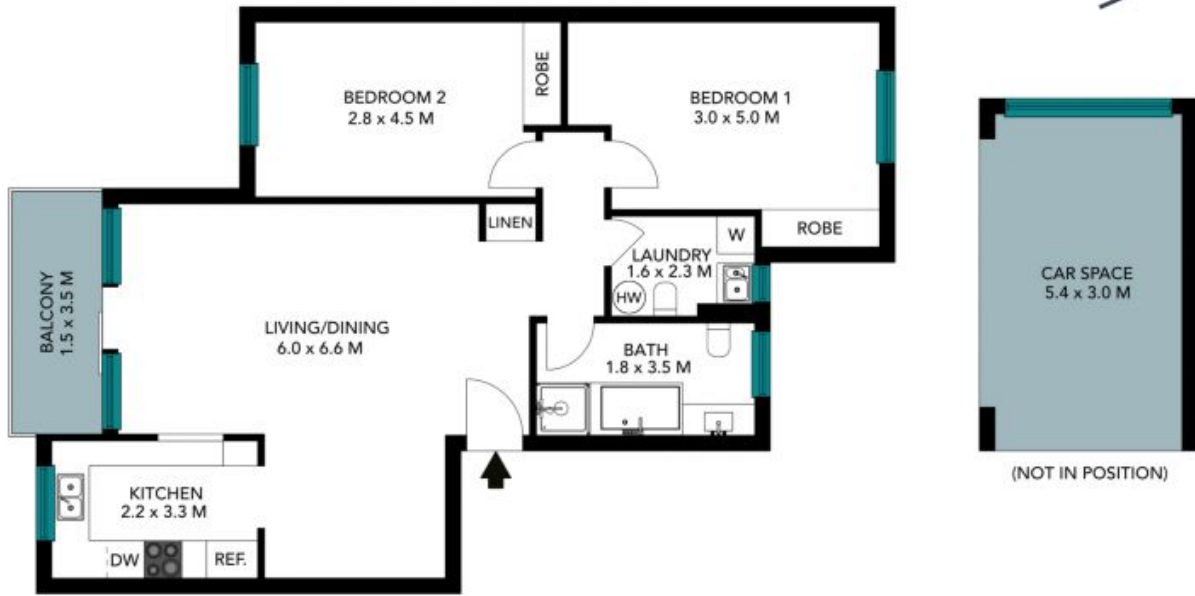


Gerard Foote

0433 421 333

18B/5-29 Wandella Road
Miranda

STONE



The floor plan is not to scale; measurements are indicative and in metres. Exterior elements are not in position. Plans should not be relied on. Interested parties should make and rely on their own enquiries. All other information provided has been collected from reliable sources but cannot be guaranteed for accuracy.

18B/5-29 Wandella Road
Miranda



The floor plan is not to scale; measurements are indicative and in metres. All features included in this 3D plan are for inspiration purposes only. This is not an exact replica of the property or the position of exterior elements. Plans should not be relied on. Interested parties should make and rely on their own enquiries.