



19 Kingfisher Close Kincumber, NSW



Beautifully Presented Family Home in Convenient, Tranquil Location

This beautifully presented family home strikes the perfect balance between convenience and tranquillity. Nestled in a peaceful cul-de-sac just moments from Kincumber Shopping Village, local schools, and nature trails, it's a true lifestyle haven.

Price: Contact Agent
Council Rates: \$296.27 p/q
Water Rates: \$542.00 p/q



Sarah Gilchrist

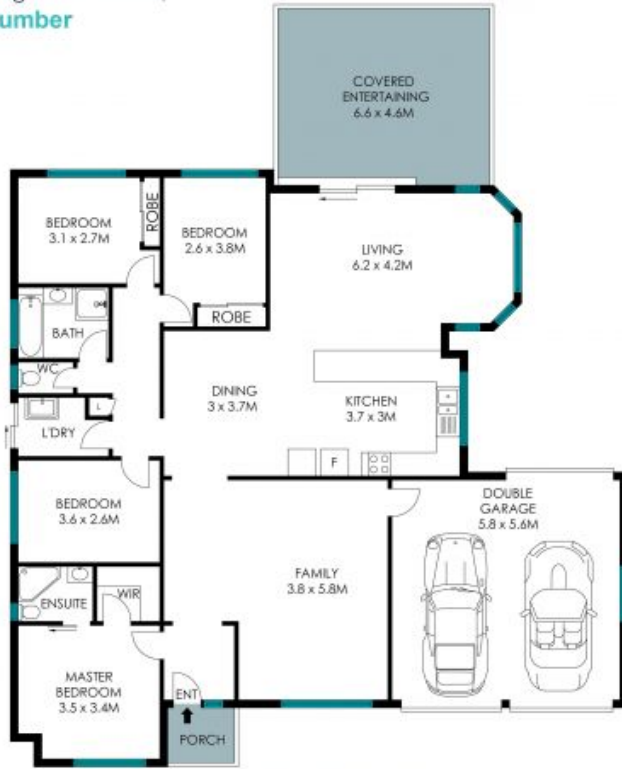
0413 412 859



Shane Marini

0487 006 982

19 Kingfisher Close,
Kincumber



Main Residence



Site Plan



Total Living Area: 205 sqm

The site plan and floor plan are not to scale; measurements are indicative and in metres. Bushes and trees are placed for illustration purposes. Plans should not be relied on. Interested parties should make and rely on their own enquiries. All other information provided has been collected from reliable sources but cannot be guaranteed for accuracy.