



2/23 Eustace Street Manly, NSW 2  1 

Renovated Art Deco apartment in the heart of Manly

Set in a boutique security block of just three, this stylish and spacious renovated Art Deco apartment delivers the ultimate in low-maintenance beachside living with an unbeatable lifestyle address. High ceilings, floorboards and abundant natural light create a refined yet relaxed atmosphere, while the large living room flows to a separate dining area with space for a study nook. Offering a modernised bathroom and access to a shared courtyard, this charming apartment is perfectly positioned only footsteps from Manly Cove, The Corso, iconic beaches, vibrant eateries and Manly Wharf for an effortless city ferry commute.

Price: Contact agent
Council Rates: \$461.00 p/q
Water Rates: \$172.83 p/q
Strata Rates: \$1,739.00 p/q



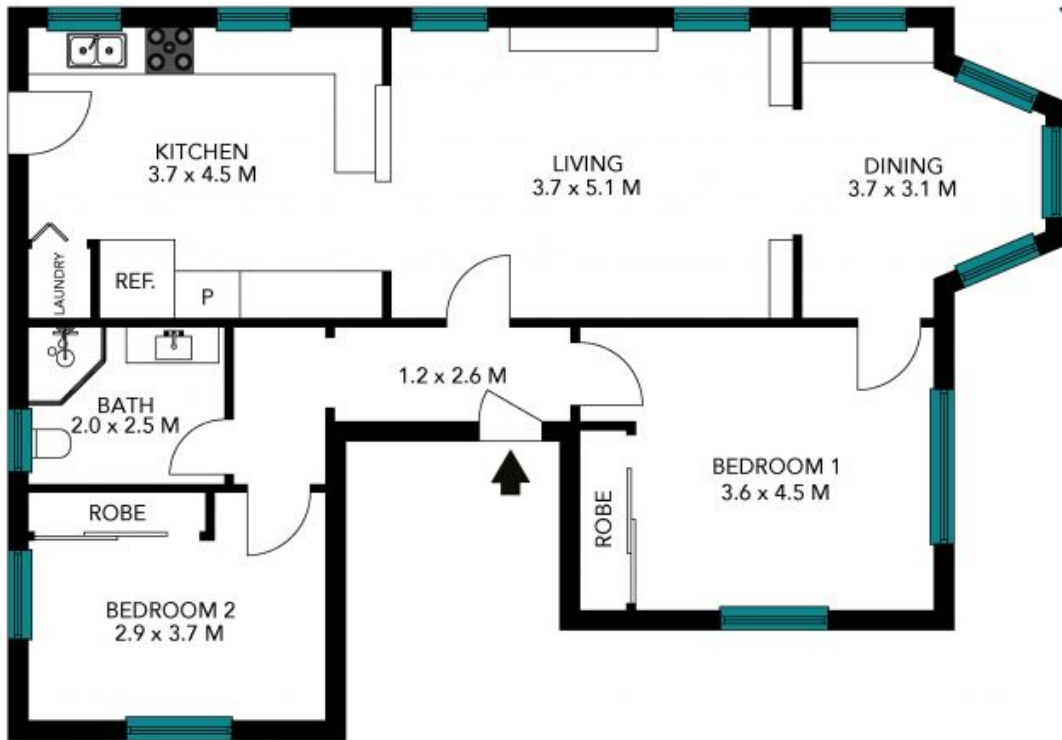
Chris Elliott
0410 416 066



Chris Elliott
0410 416 066

2/23 Eustace Street
Manly

STONE



Internal Living: 86 sqm
External Living: 0 sqm
Total Living Area: 86 sqm

The floor plan is not to scale, measurements are indicative and in metres. Exterior elements are not in position. Plans should not be relied on. Interested parties should make and rely on their own enquiries. All other information provided has been collected from reliable sources but cannot be guaranteed for accuracy.

2/23 Eustace Street
Manly

STONE



Internal Living: 86 sqm
External Living: 0 sqm
Total Living Area: 86 sqm



The floor plan is not to scale; measurements are indicative and in metres. All features included in this 3D plan are for inspiration purposes only. This is not an exact replica of the property or the position of exterior elements. Plans should not be relied on. Interested parties should make and rely on their own enquiries.