



15/40-42A Park Avenue Waitara, NSW

2 2 1

Sold by Adam Noakes and Angel Li 0450 753 268

Sold by Adam Noakes and Angel Li 0450 753 268

Experience the ultimate "walk to everything" lifestyle in this stylish level 3 apartment, featuring contemporary interiors and an unbeatable location. Just a short stroll to Waitara railway station, Hornsby's vibrant shopping precinct, and trendy cafes, this home also boasts a prime position directly opposite the expansive Mark Taylor Oval, playground, and tennis courts. Perfect for both owner-occupiers and investors alike.

Price: Sold by Adam Noakes and Angel Li 0450 753
Council Rates: \$681.00 p/q
Water Rates: \$172.00 p/q
Strata Rates: \$1,251.00 p/q



Adam Noakes

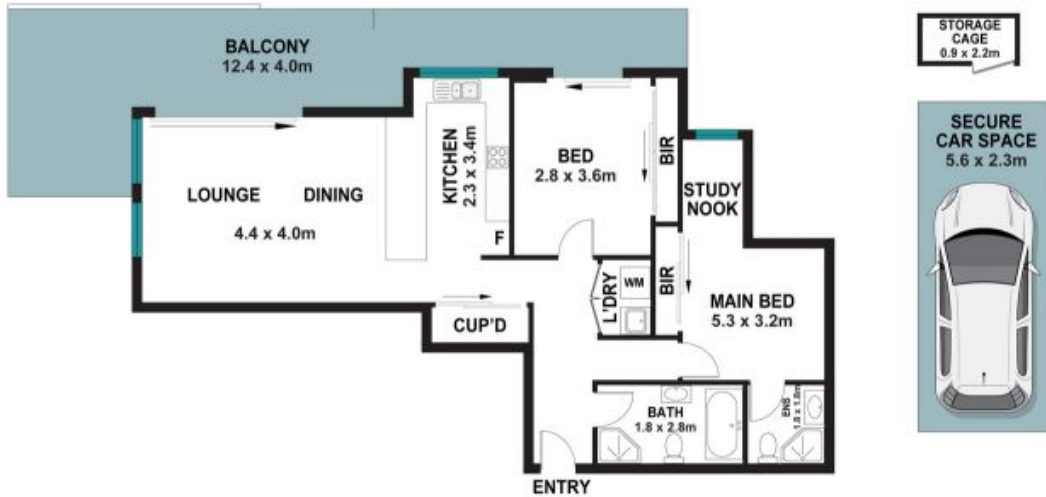
0450 753 268



Angel (Qinghua) Li

0452 532 578

15/40-42a Park Avenue
Waitara



The site plan and floor plan are not to scale; measurements are indicative and in metres. Bushes and trees are placed for illustration purposes. Plans should not be relied on. Interested parties should make and rely on their own enquiries. All other information provided has been collected from reliable sources but cannot be guaranteed for accuracy.