



521/18 Epping Park Drive Epping, NSW

2 

2 

2 

Bright Sun-filled Apartment with Resort Living

Enjoy modern living in the popular Epping Park community. This top-floor apartment is filled with natural light, has extra high ceiling, and a large terrace perfect for relaxing or entertaining.

Price: \$850,000 - \$900,000



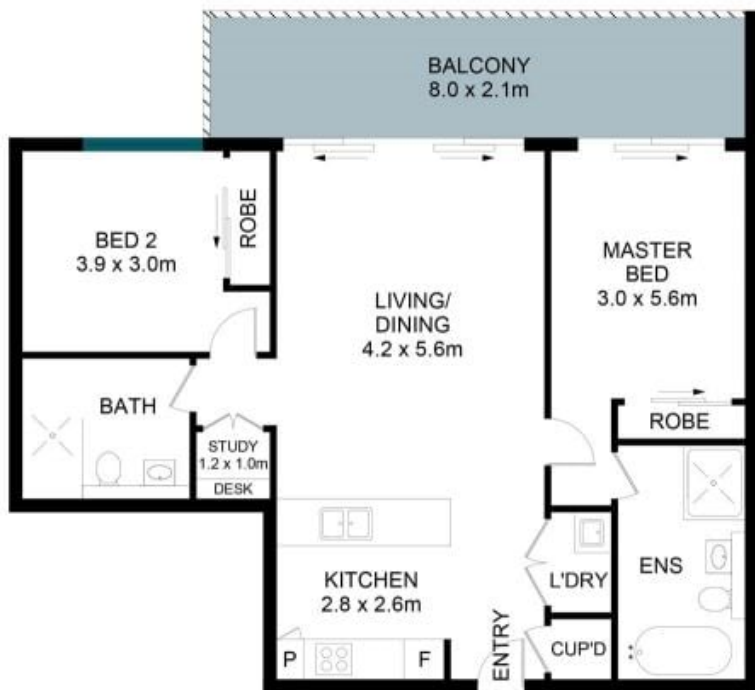
Juliet (Jiangmin) Chen

0408 997 997



Team Juliet

0466 907 733



The floor plan is not to scale; measurements are indicative and in metres. Exterior elements are not in position. Plans should not be relied on. Interested parties should make and rely on their own enquiries.

521/18 Epping Park Drive, Epping

