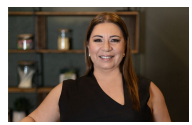


10/21 Lachlan Street Warwick Farm, NSW 2 1 1

Spacious Two Bedroom Unit in Prime Location

Perfectly positioned in the heart of Warwick Farm is this tidy spacious two bedroom unit. Conveniently located near Westfield, Liverpool Hospital, public transport, selection of schools, universities, restaurants and all moments to Liverpool CBD.

Water Rates: \$173.52 p/q
Strata Rates: \$773.05 p/q



Angela McInerney
0435 348 141



Frank Bartolone
0411 477 758

10/21 Lachlan Street
Warwick Farm



The floor plan is not to scale; measurements are indicative and in metres. Exterior elements are not in position. Plans should not be relied on. Interested parties should make and rely on their own enquiries. All other information provided has been collected from reliable sources but cannot be guaranteed for accuracy.