



8 Lavender Close Casula, NSW

5 2 2

### Peacefully positioned in a quiet street

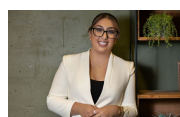
Peacefully positioned in a quiet low traffic cul-de-sac, this beautiful spacious home would provide any family the opportunity for an enviable lifestyle. Set on a generous block of land, this dual level home presents a comfortable haven with great in/outdoor entertaining spaces.

**Price:** \$880 pw  
**Bond:** \$3,520  
**Available Date:** 02/09/2025



**Danielle Reynolds**

0432 790 090



**Eevet Arabo**

0402 100 814