

4/22 Henry Street Parramatta, NSW

3  2  2 

Spacious North Facing Three Bedroom Apartment

Located in a highly convenient position, this well-presented apartment offers comfortable living with easy access to Parramatta CBD, train station, bus interchange, ferry wharf, and light rail. Enjoy being within walking distance to Westfield Shopping Centre, vibrant cafes, restaurants, schools, and riverside parklands.

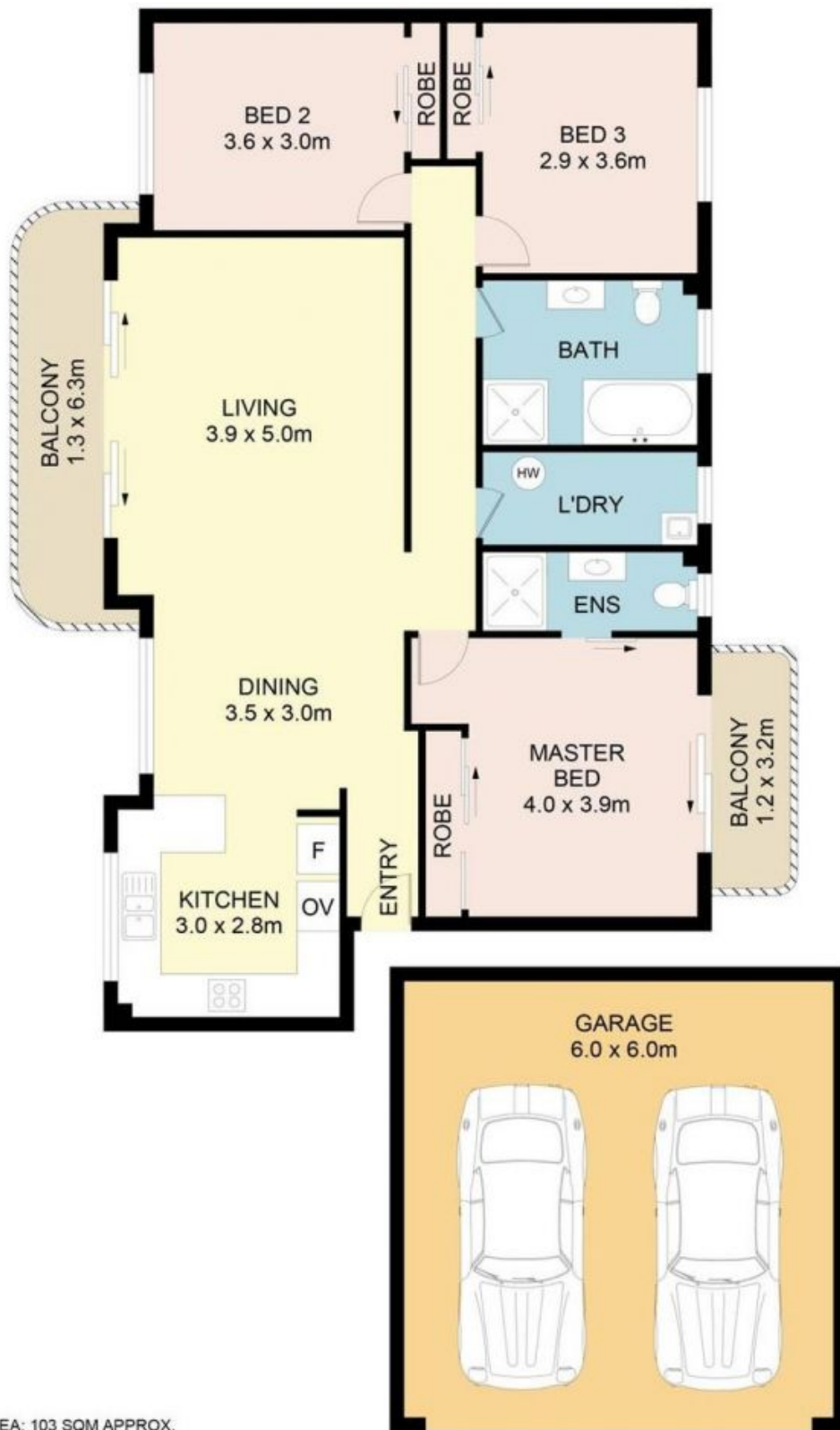
Price: \$795.00 pw

Available Date: 02/09/2025



Bella Losurdo

02 9630 8899



INTERNAL AREA: 103 SQM APPROX.

4/22 Henry Street, Parramatta